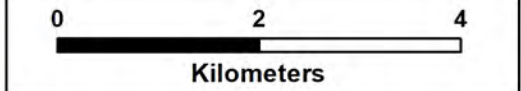


31°12'0"E 31°16'0"E 31°20'0"E 31°24'0"E



**LEGEND**

- Main Roads
- Prospecting Areas
- Project Area
- Municipal Wards
- Local Municipality



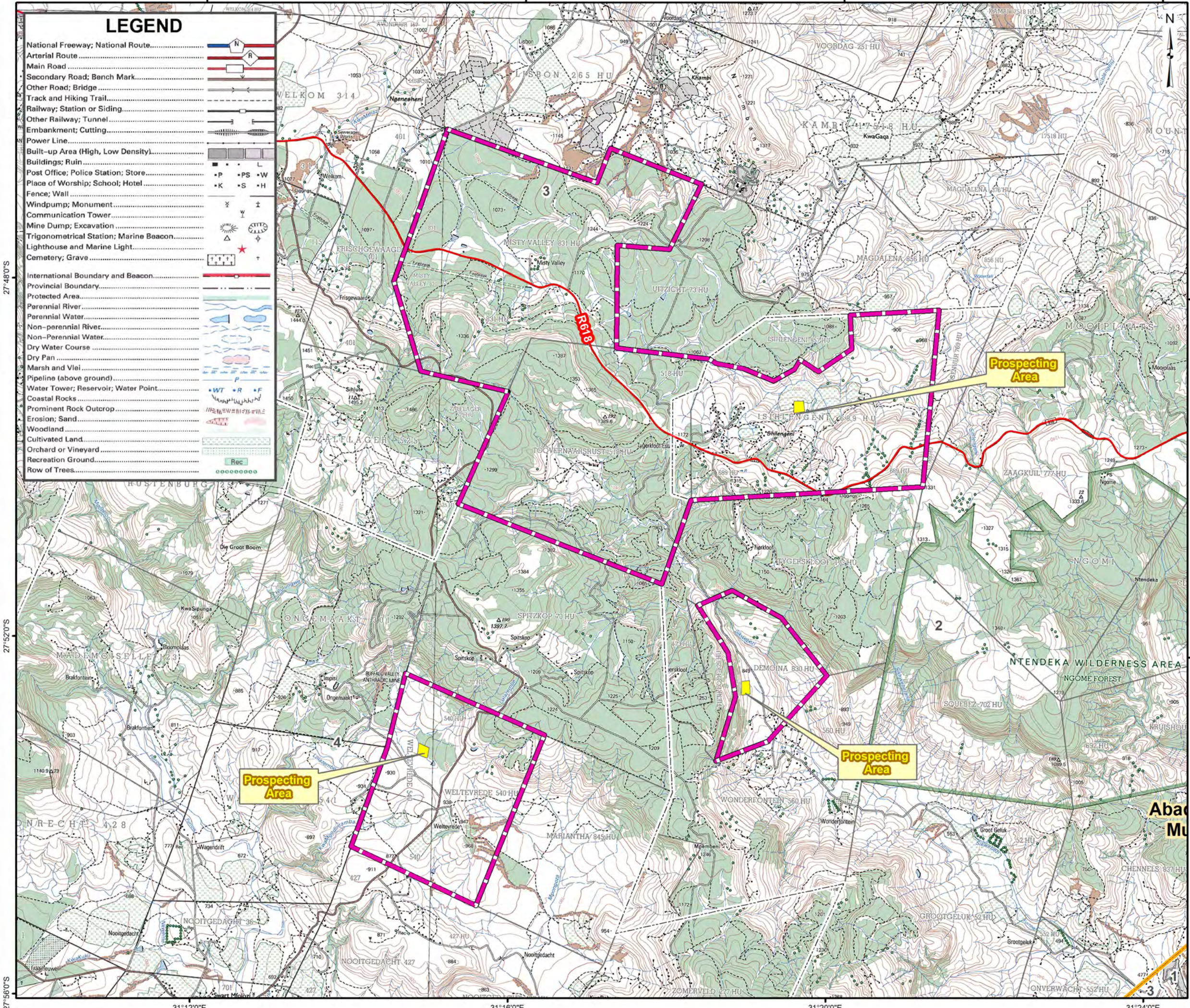
PROJECT: **Niara Minerals (Pty) Ltd: Isihlengeni Prospecting Rights Application**

TITLE: **Topographic Locality Map**

SCALE: 1:75 000	REV: 3
DATE: 22/07/2025	A3
Projection: Transverse Mercator 31°E	
Datum: WGS 84	

**LEGEND**

- National Freeway; National Route
- Arterial Route
- Main Road
- Secondary Road; Bench Mark
- Other Road; Bridge
- Track and Hiking Trail
- Railway; Station or Siding
- Other Railway; Tunnel
- Embankment; Cutting
- Power Line
- Built-up Area (High, Low Density)
- Buildings; Ruin
- Post Office; Police Station; Store
- Place of Worship; School; Hotel
- Fence; Wall
- Windpump; Monument
- Communication Tower
- Mine Dump; Excavation
- Trigonometrical Station; Marine Beacon
- Lighthouse and Marine Light
- Cemetery; Grave
- International Boundary and Beacon
- Provincial Boundary
- Protected Area
- Perennial River
- Perennial Water
- Non-perennial River
- Non-Perennial Water
- Dry Water Course
- Dry Pan
- Marsh and Vlei
- Pipeline (above ground)
- Water Tower; Reservoir; Water Point
- Coastal Rocks
- Prominent Rock Outcrop
- Erosion; Sand
- Woodland
- Cultivated Land
- Orchard or Vineyard
- Recreation Ground
- Row of Trees



31°12'0"E 31°16'0"E 31°20'0"E 31°24'0"E

27°48'0"S 27°52'0"S 27°56'0"S



**Regulation 2 (2) Plan:**  
**Niara Minerals (Pty) Ltd:**  
**Isihlengi Prospecting Rights Application**

Within the Abaqulusi Local Municipality  
 (Ward 2, 3 & 4 ), Zululand District,  
 KwaZulu-Natal Province

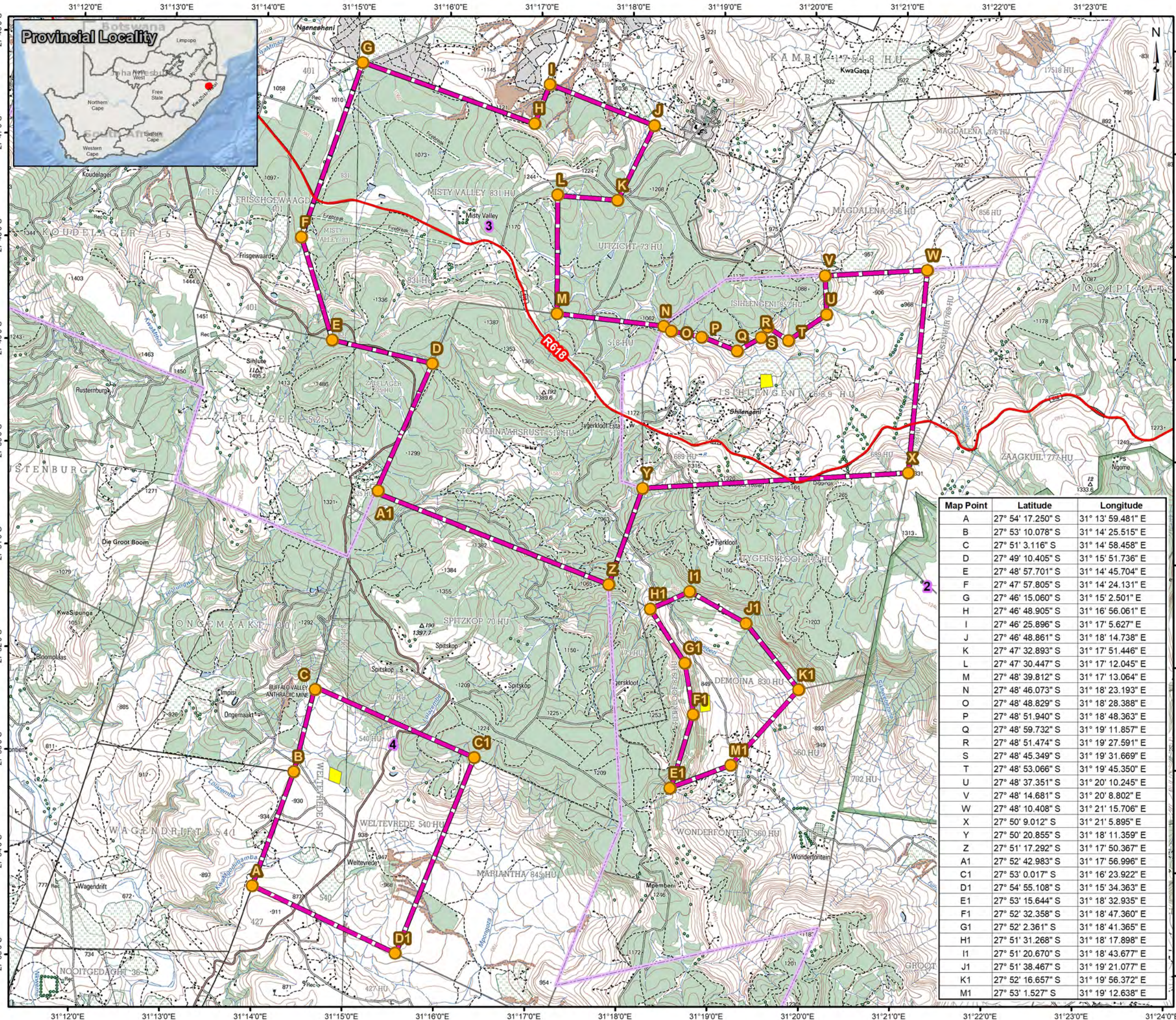
**Prospecting Area: 15 Ha**  
 Datum: WGS 84  
 Projection: Transverse Mercator Lo 31°E  
 QDS: 2731CC and 2731CD

**Application for Prospecting Rights**  
 Application compiled in accordance  
 with Regulation 2 (2) of the Minerals and  
 Petroleum Resources Development Act  
 2002 (Act 28 of 2002)

Description of the land included in  
 the prospecting rights application:

The area covers the extent of points A-m1  
 within RE of Isihlengi 689 HU, RE of  
 Demoina 830 HU, Ptn 1 of Weltevrede  
 540 HU, Ptn 1 Misty Valley 831 HU and  
 Toovernaars Rust 518 HU

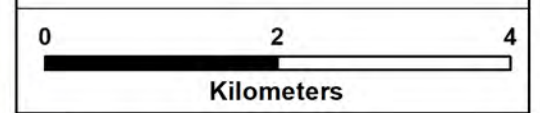
Within the Abaqulusi Local Municipality  
 (Ward 2, 3 & 4 ), Zululand District,  
 KwaZulu-Natal Province



Map Point	Latitude	Longitude
A	27° 54' 17.250" S	31° 13' 59.481" E
B	27° 53' 10.078" S	31° 14' 25.515" E
C	27° 51' 3.116" S	31° 14' 58.458" E
D	27° 49' 10.405" S	31° 15' 51.736" E
E	27° 48' 57.701" S	31° 14' 45.704" E
F	27° 47' 57.805" S	31° 14' 24.131" E
G	27° 46' 15.060" S	31° 15' 2.501" E
H	27° 46' 48.905" S	31° 16' 56.061" E
I	27° 46' 25.896" S	31° 17' 5.627" E
J	27° 46' 48.861" S	31° 18' 14.738" E
K	27° 47' 32.893" S	31° 17' 51.446" E
L	27° 47' 30.447" S	31° 17' 12.045" E
M	27° 48' 39.812" S	31° 17' 13.064" E
N	27° 48' 46.073" S	31° 18' 23.193" E
O	27° 48' 48.829" S	31° 18' 28.388" E
P	27° 48' 51.940" S	31° 18' 48.363" E
Q	27° 48' 59.732" S	31° 19' 11.857" E
R	27° 48' 51.474" S	31° 19' 27.591" E
S	27° 48' 45.349" S	31° 19' 31.669" E
T	27° 48' 53.066" S	31° 19' 45.350" E
U	27° 48' 37.351" S	31° 20' 10.245" E
V	27° 48' 14.681" S	31° 20' 8.802" E
W	27° 48' 10.408" S	31° 21' 15.706" E
X	27° 50' 9.012" S	31° 21' 5.895" E
Y	27° 50' 20.855" S	31° 18' 11.359" E
Z	27° 51' 17.292" S	31° 17' 50.367" E
A1	27° 52' 42.983" S	31° 17' 56.996" E
C1	27° 53' 0.017" S	31° 16' 23.922" E
D1	27° 54' 55.108" S	31° 15' 34.363" E
E1	27° 53' 15.644" S	31° 18' 32.935" E
F1	27° 52' 32.358" S	31° 18' 47.360" E
G1	27° 52' 2.361" S	31° 18' 41.365" E
H1	27° 51' 31.268" S	31° 18' 17.898" E
I1	27° 51' 20.670" S	31° 18' 43.677" E
J1	27° 51' 38.467" S	31° 19' 21.077" E
K1	27° 52' 16.657" S	31° 19' 56.372" E
M1	27° 53' 1.527" S	31° 19' 12.638" E

**LEGEND**

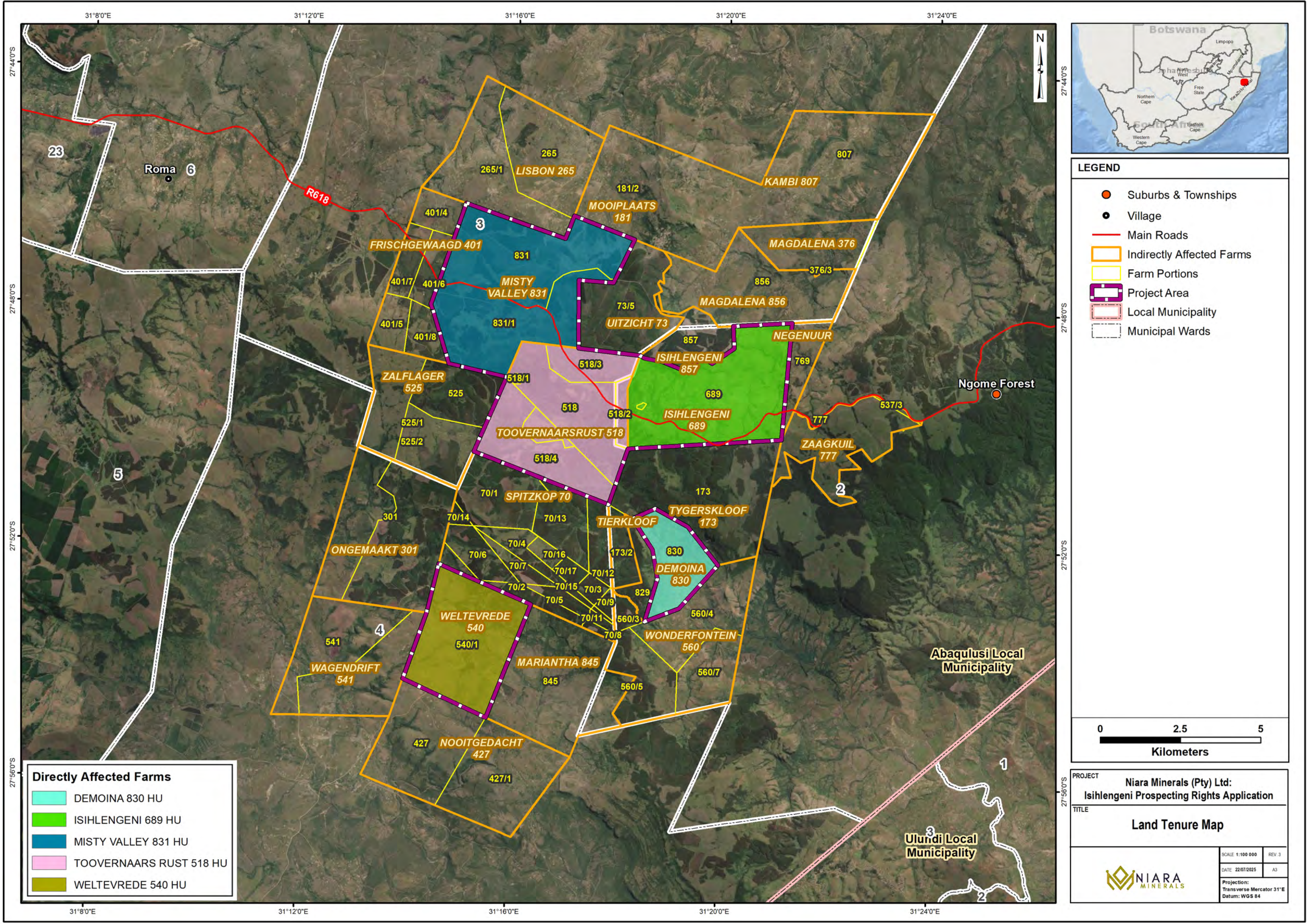
- PRA Boundary Points
- Main Roads
- Prospecting Areas
- Project Area
- Municipal Wards



**PROJECT**  
 Niara Minerals (Pty) Ltd:  
 Isihlengi Prospecting Rights Application

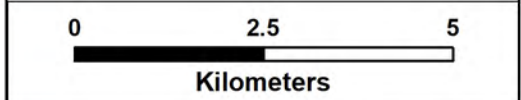
**TITLE**  
 Reg 2 (2) Plan

SCALE: 1:65 000    REV: 1  
 DATE: 22/07/2025    AS  
 Projection: Transverse Mercator (31E)  
 Datum: WGS 84



**LEGEND**

- Suburbs & Townships
- Village
- Main Roads
- Indirectly Affected Farms
- Farm Portions
- Project Area
- Local Municipality
- Municipal Wards



**Directly Affected Farms**

- DEMOINA 830 HU
- ISIHLENGENI 689 HU
- MISTY VALLEY 831 HU
- TOOVERNAARS RUST 518 HU
- WELTEVREDE 540 HU

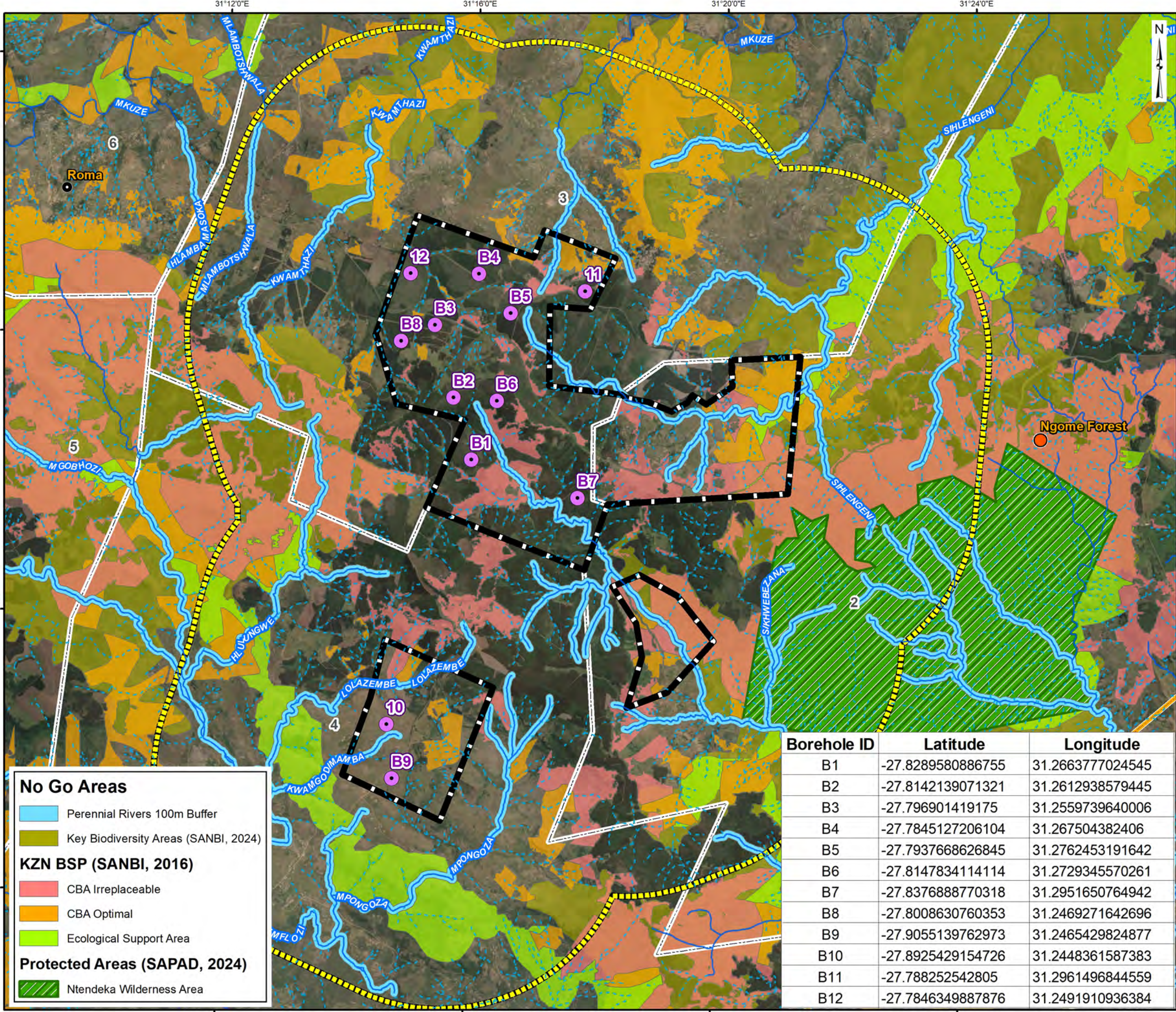
PROJECT: Nira Minerals (Pty) Ltd:  
Isihlengeni Prospecting Rights Application

TITLE: Land Tenure Map

SCALE: 1:100 000    REV: 3

DATE: 22/07/2025    A3

Projection: Transverse Mercator 31°E  
Datum: WGS 84



**LEGEND**

- Suburbs & Townships
- Village
- Proposed Borehole Locations
- Perennial Rivers
- - - Non-Perennial Rivers
- Prospecting Area 5Km Buffer
- Project Area
- Local Municipality

**No Go Areas**

- Perennial Rivers 100m Buffer
- Key Biodiversity Areas (SANBI, 2024)

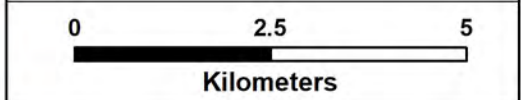
**KZN BSP (SANBI, 2016)**

- CBA Irreplaceable
- CBA Optimal
- Ecological Support Area

**Protected Areas (SAPAD, 2024)**

- Ntendeka Wilderness Area

Borehole ID	Latitude	Longitude
B1	-27.8289580886755	31.2663777024545
B2	-27.8142139071321	31.2612938579445
B3	-27.796901419175	31.2559739640006
B4	-27.7845127206104	31.267504382406
B5	-27.7937668626845	31.2762453191642
B6	-27.8147834114114	31.2729345570261
B7	-27.8376888770318	31.2951650764942
B8	-27.8008630760353	31.2469271642696
B9	-27.9055139762973	31.2465429824877
B10	-27.8925429154726	31.2448361587383
B11	-27.788252542805	31.2961496844559
B12	-27.7846349887876	31.2491910936384



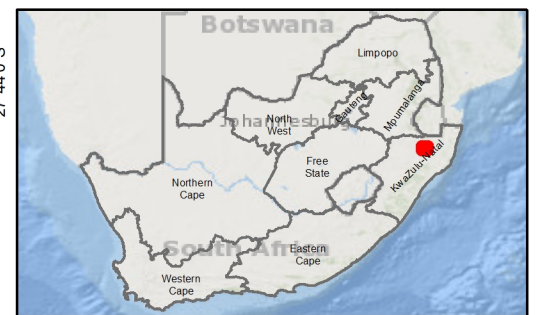
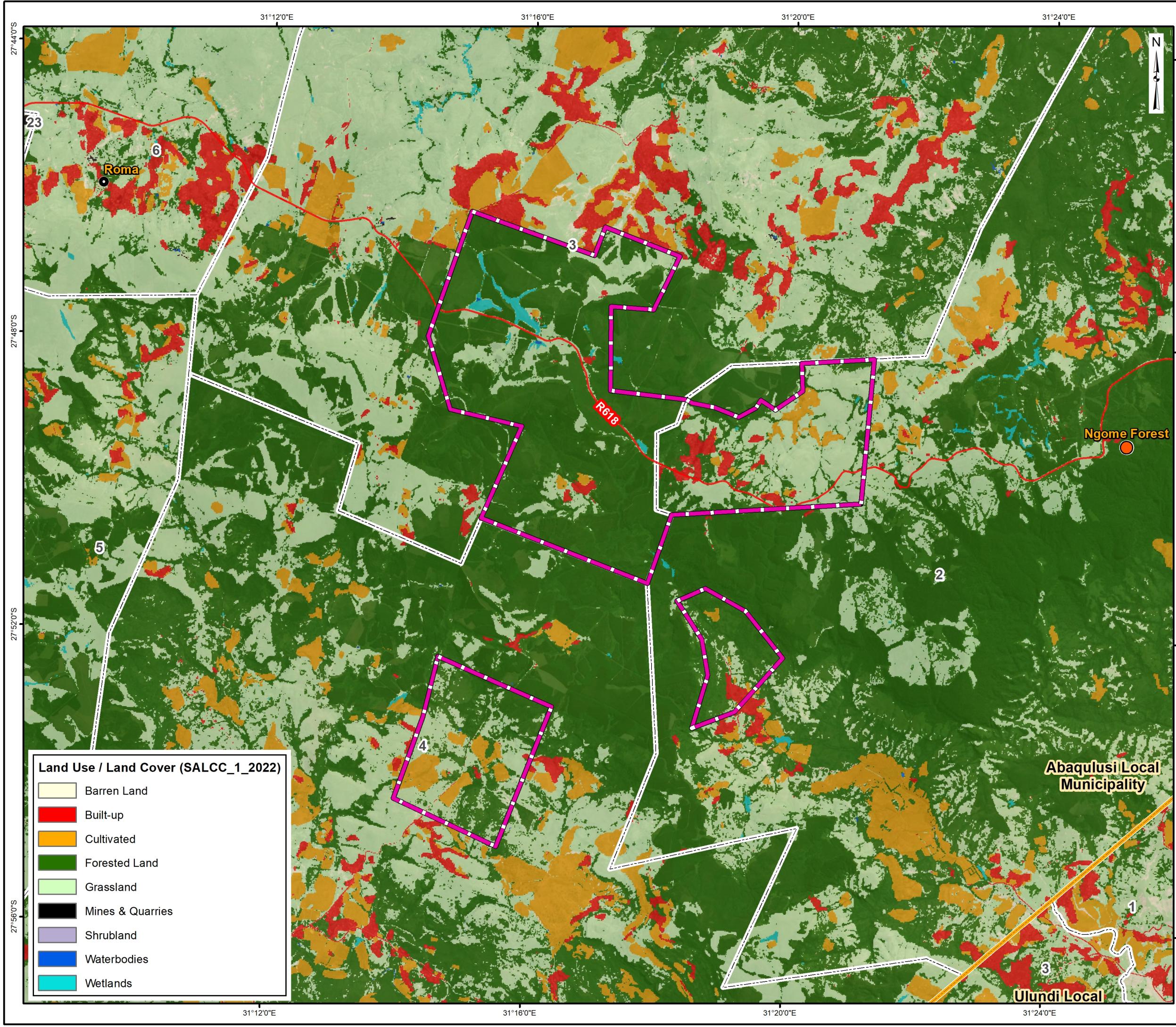
PROJECT: **Niara Minerals (Pty) Ltd: Isihlengeni Prospecting Rights Application**

TITLE: **Site Plan**

SCALE: 1:96 439    REV: 3

DATE: 30/07/2025    A3

Projection: Transverse Mercator 31°E  
Datum: WGS 84

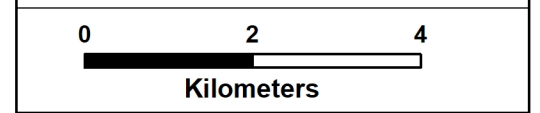


**LEGEND**

- Suburbs & Townships
- Village
- Main Roads
- Project Area
- Local Municipality

**Land Use / Land Cover (SALCC\_1\_2022)**

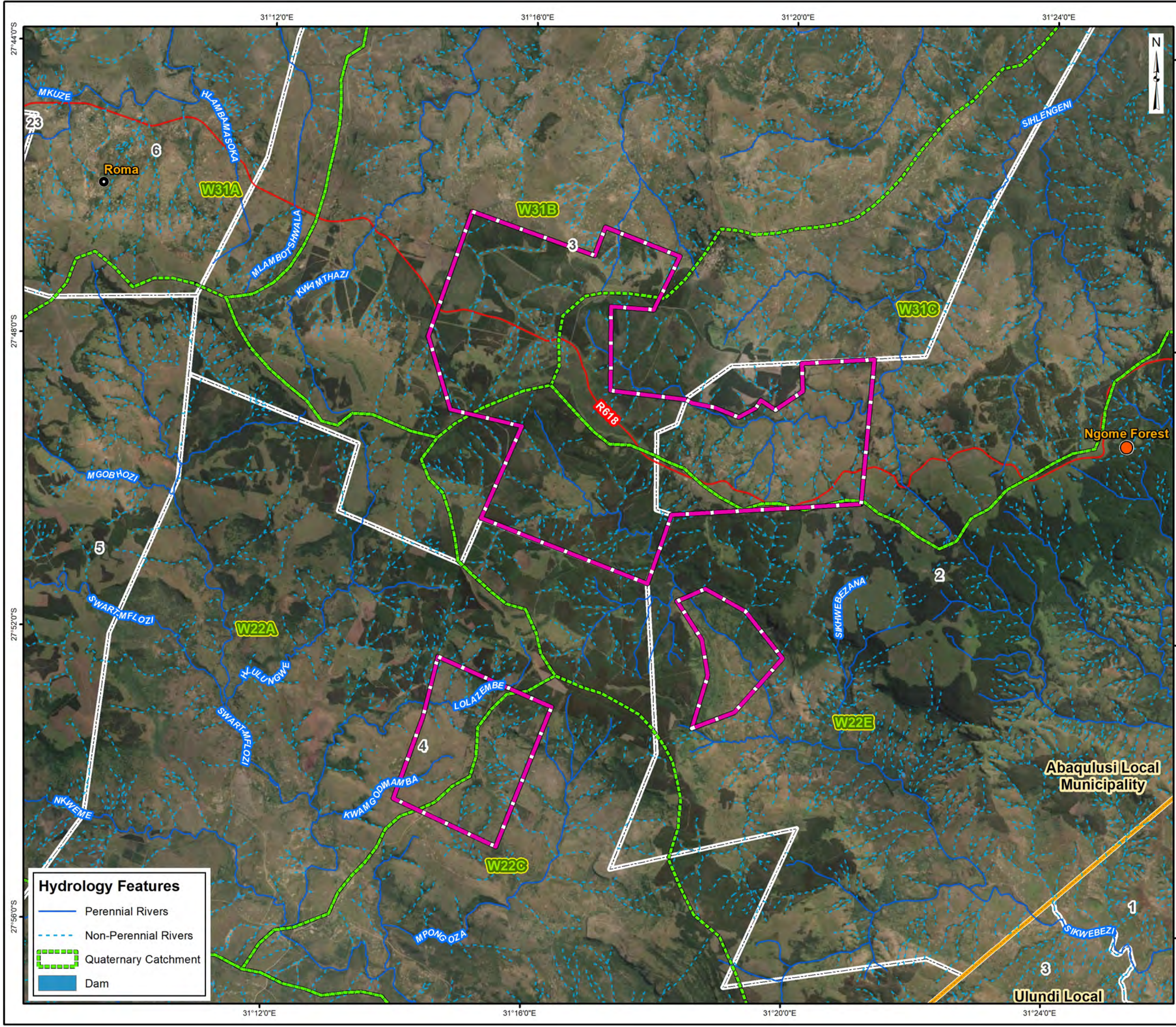
- Barren Land
- Built-up
- Cultivated
- Forested Land
- Grassland
- Mines & Quarries
- Shrubland
- Waterbodies
- Wetlands



**PROJECT**  
 Nira Minerals (Pty) Ltd:  
 Isihlengeni Prospecting Rights Application

**TITLE**  
 Land Use Map

<b>SCALE</b> 1:90 000	<b>REV</b> 3
<b>DATE</b> 22/07/2025	<b>A3</b>
<b>Projection:</b> Transverse Mercator 31°E	
<b>Datum:</b> WGS 84	

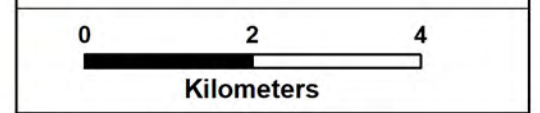


**LEGEND**

- Suburbs & Townships
- Village
- Perennial Rivers
- - - Non-Perennial Rivers
- Main Roads
- Project Area
- Municipal Wards
- Local Municipality

**Hydrology Features**

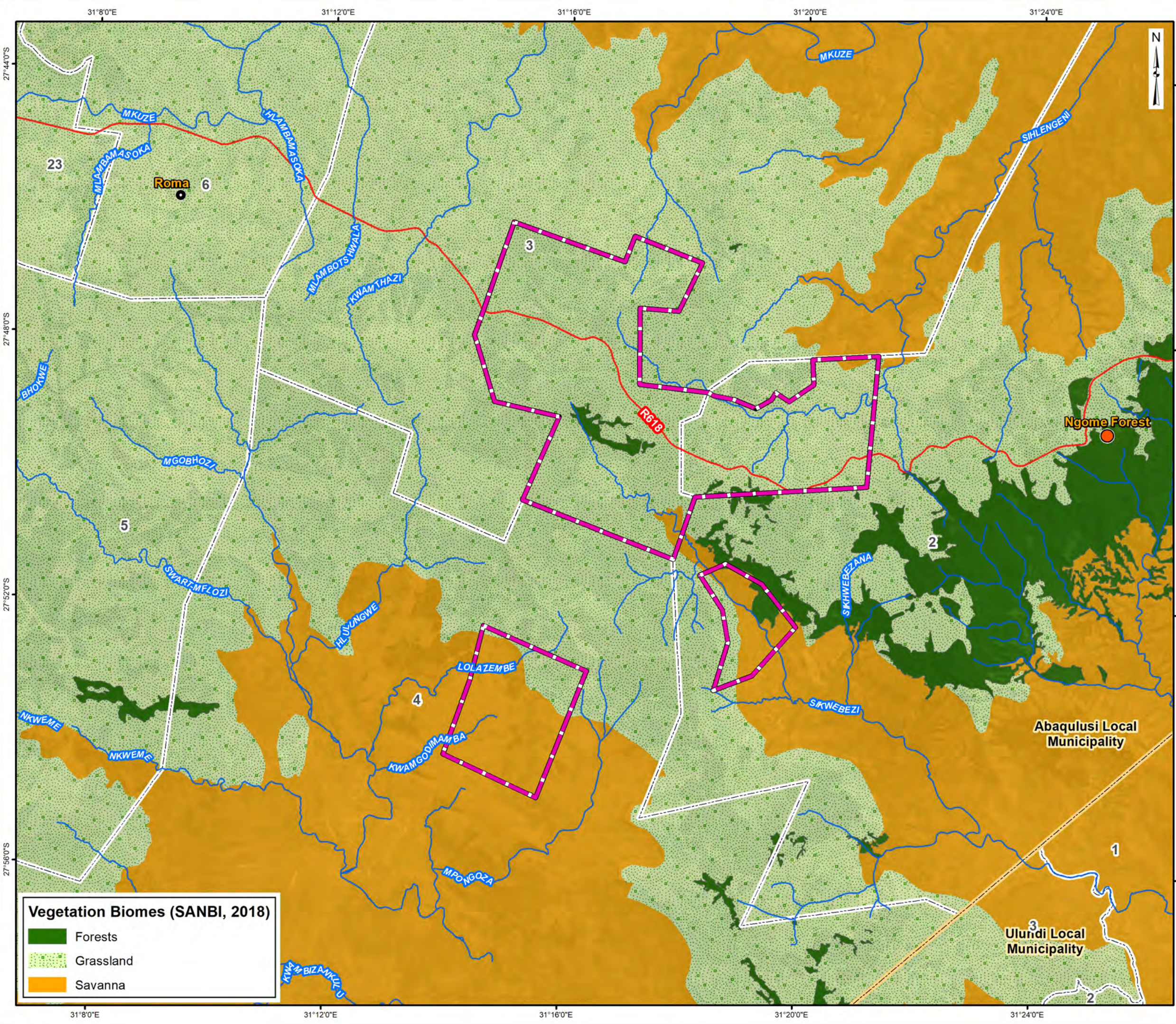
- Perennial Rivers
- - - Non-Perennial Rivers
- Quaternary Catchment
- Dam



PROJECT: **Niara Minerals (Pty) Ltd: Isihlengeni Prospecting Rights Application**

TITLE: **Hydrology Map**

SCALE: 1:90 000	REV: 3
DATE: 22/07/2025	A3
Projection: Transverse Mercator 31°E	
Datum: WGS 84	



**LEGEND**

- Suburbs & Townships
- Village
- Project Area
- Perennial Rivers
- Main Roads
- Local Municipality



**Vegetation Biomes (SANBI, 2018)**

- Forests
- Grassland
- Savanna


PROJECT: **Niara Minerals (Pty) Ltd: Isihlengeni Prospecting Rights Application**

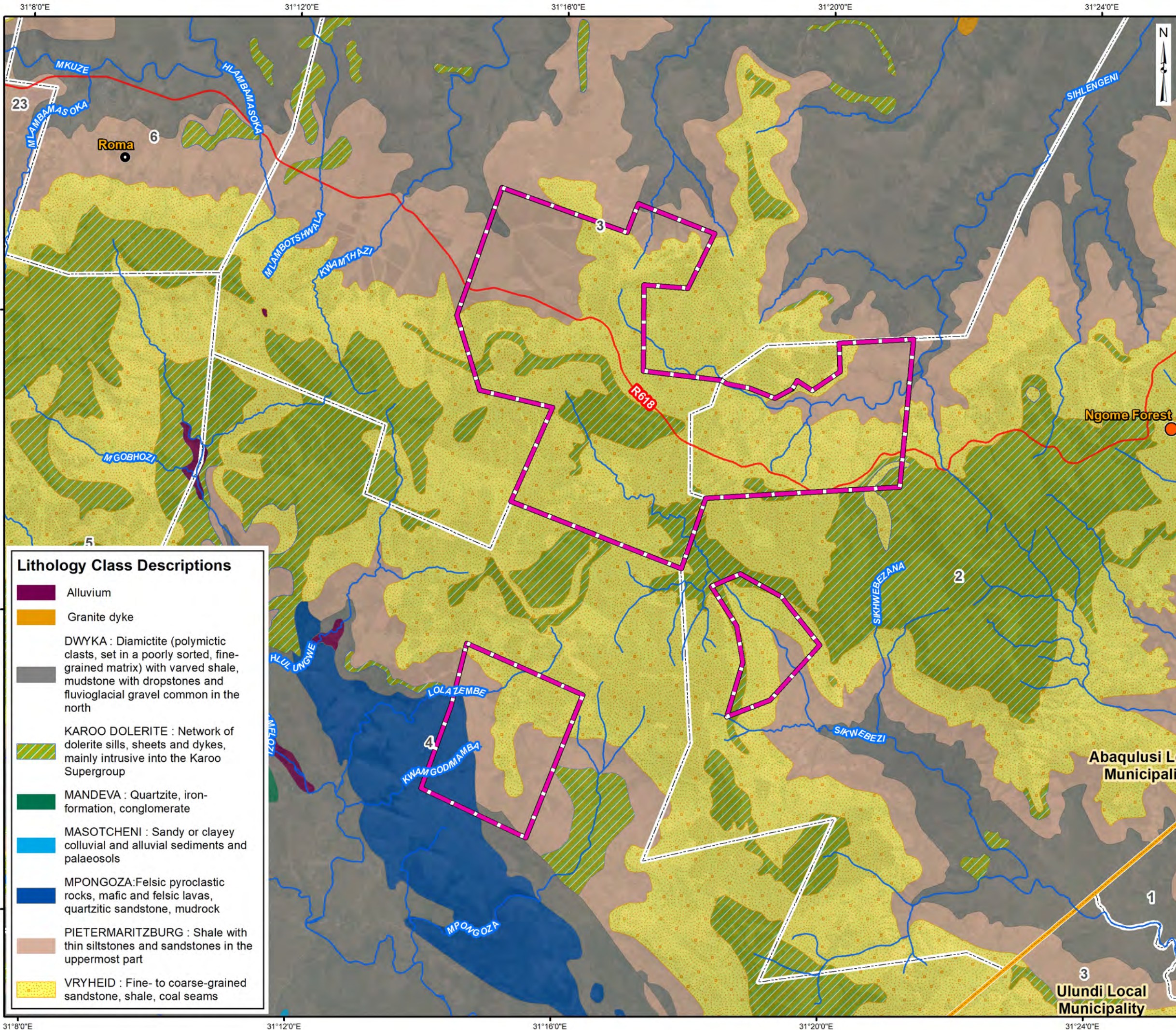
TITLE: **Biome Map**

SCALE: 1:100 000    REV: 3

DATE: 22/07/2025    A3

Projection: Transverse Mercator 31°E  
Datum: WGS 84



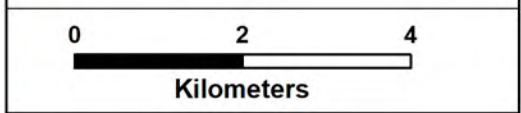


**LEGEND**

- Suburbs & Townships
- Village
- Perennial Rivers
- Main Roads
- Project Area
- Local Municipality

**Lithology Class Descriptions**

- Alluvium
- Granite dyke
- DWYKA : Diamictite (polymictic clasts, set in a poorly sorted, fine-grained matrix) with varved shale, mudstone with dropstones and fluvioglacial gravel common in the north
- KAROO DOLERITE : Network of dolerite sills, sheets and dykes, mainly intrusive into the Karoo Supergroup
- MANDEVA : Quartzite, iron-formation, conglomerate
- MASOTCHENI : Sandy or clayey colluvial and alluvial sediments and palaeosols
- MPONGOZA: Felsic pyroclastic rocks, mafic and felsic lavas, quartzitic sandstone, mudrock
- PIETERMARITZBURG : Shale with thin siltstones and sandstones in the uppermost part
- VRYHEID : Fine- to coarse-grained sandstone, shale, coal seams



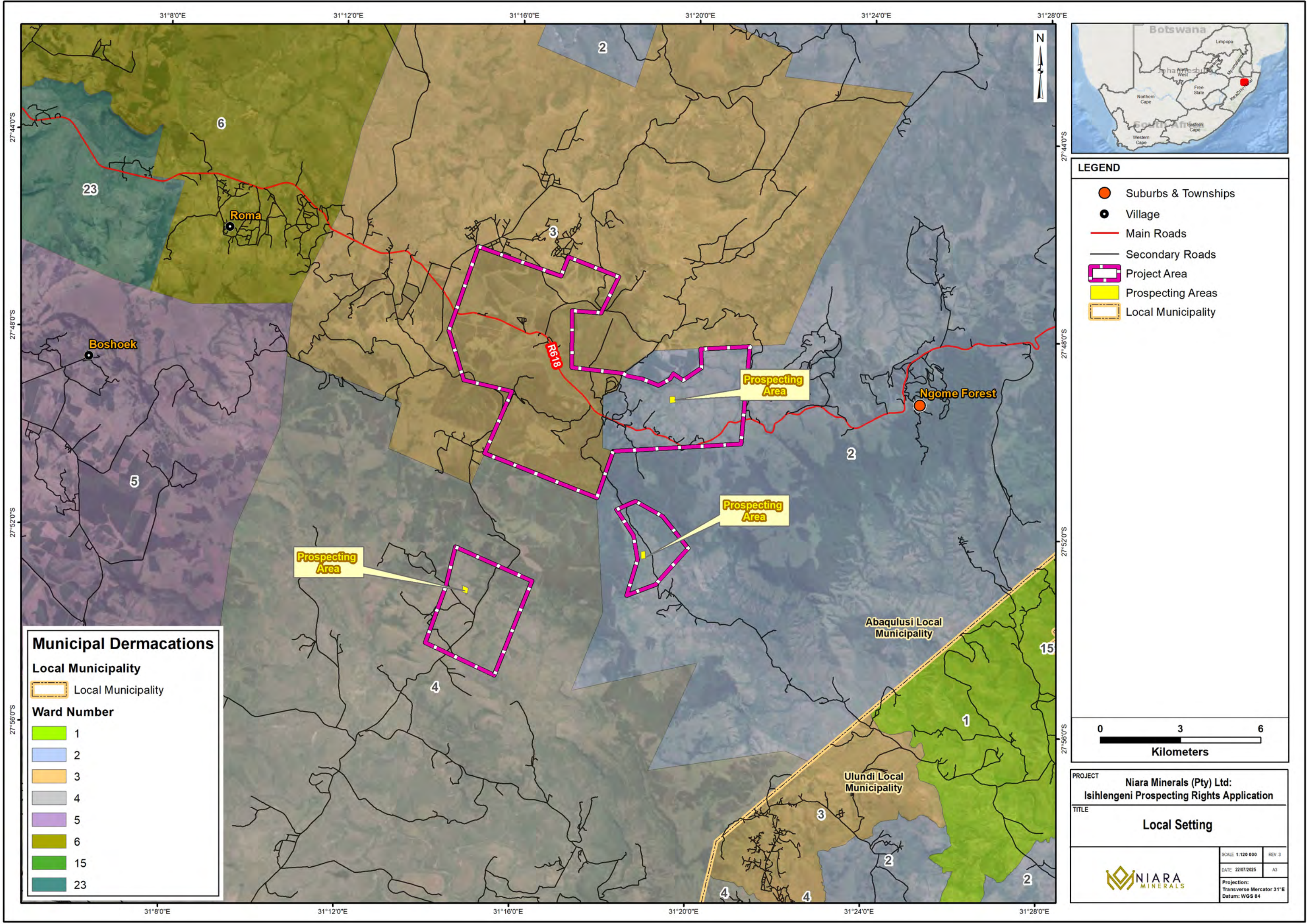
PROJECT: **Niara Minerals (Pty) Ltd: Isihlengeni Prospecting Rights Application**

TITLE: **Geology Map**

SCALE: 1:90 000    REV: 3

DATE: 22/07/2025    A3

Projection: Transverse Mercator 31°E  
Datum: WGS 84



**LEGEND**

- Suburbs & Townships
- Village
- Main Roads
- Secondary Roads
- Project Area
- Prospecting Areas
- Local Municipality

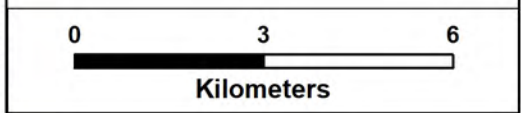
**Municipal Dermacations**

**Local Municipality**

- Local Municipality

**Ward Number**

- 1
- 2
- 3
- 4
- 5
- 6
- 15
- 23

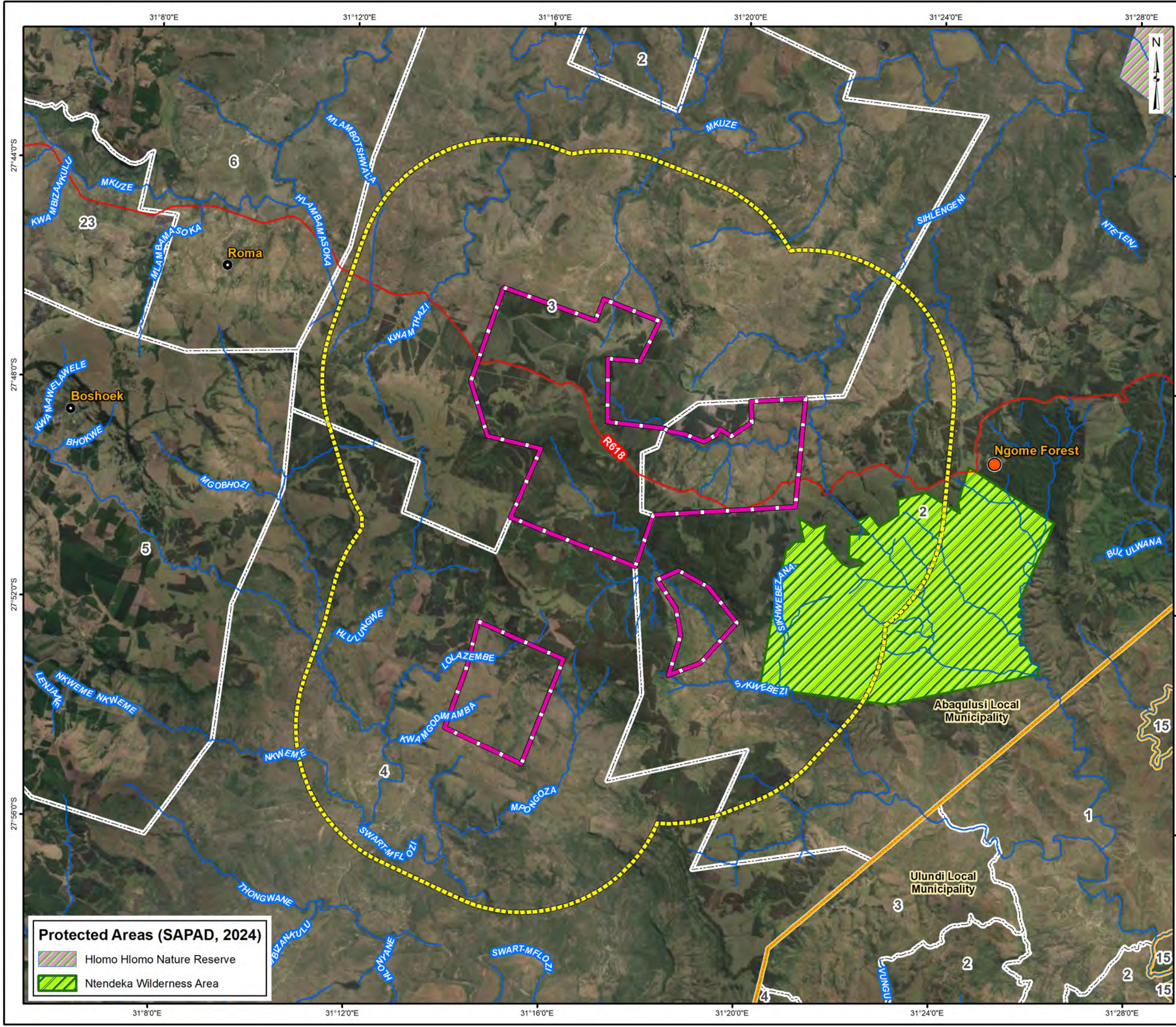


**PROJECT**  
 Niara Minerals (Pty) Ltd:  
 Isihlengeni Prospecting Rights Application

**TITLE**  
 Local Setting

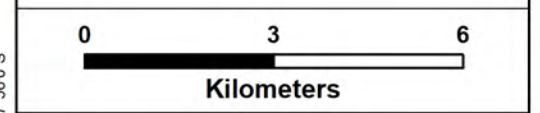
**NIARA MINERALS**

SCALE: 1:120 000	REV: 3
DATE: 22/07/2025	A3
Projection: Transverse Mercator 31°E	
Datum: WGS 84	



**LEGEND**

- Suburbs & Townships
- Village
- Perennial Rivers
- Main Roads
- Prospecting Area 5Km Buffer
- Project Area
- Local Municipality



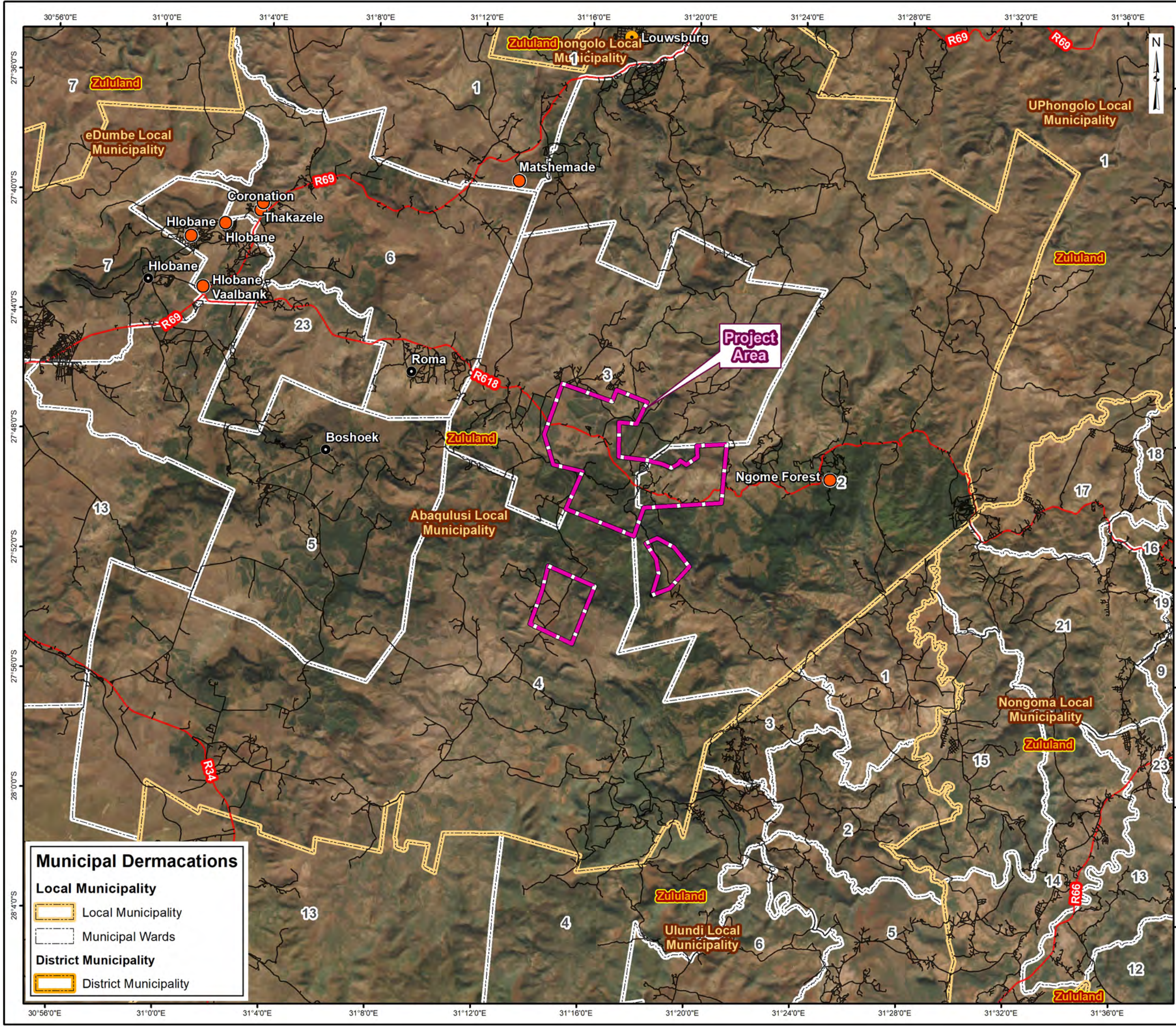
**Protected Areas (SAPAD, 2024)**

- Hlomo Hlomo Nature Reserve
- Ntendeka Wilderness Area

PROJECT: **Niara Minerals (Pty) Ltd: Isihlengeni Prospecting Rights Application**

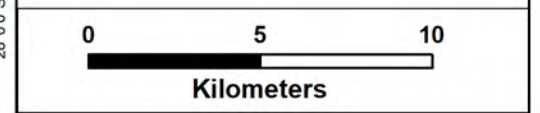
TITLE: **Protected Areas**

SCALE: 1:120 000	REV: 3
DATE: 23/07/2025	A3
Projection: Transverse Mercator 31°E Datum: WGS 84	



**LEGEND**

- Suburbs & Townships
- Town
- Village
- Main Roads
- Secondary Roads
- Project Area
- Local Municipality

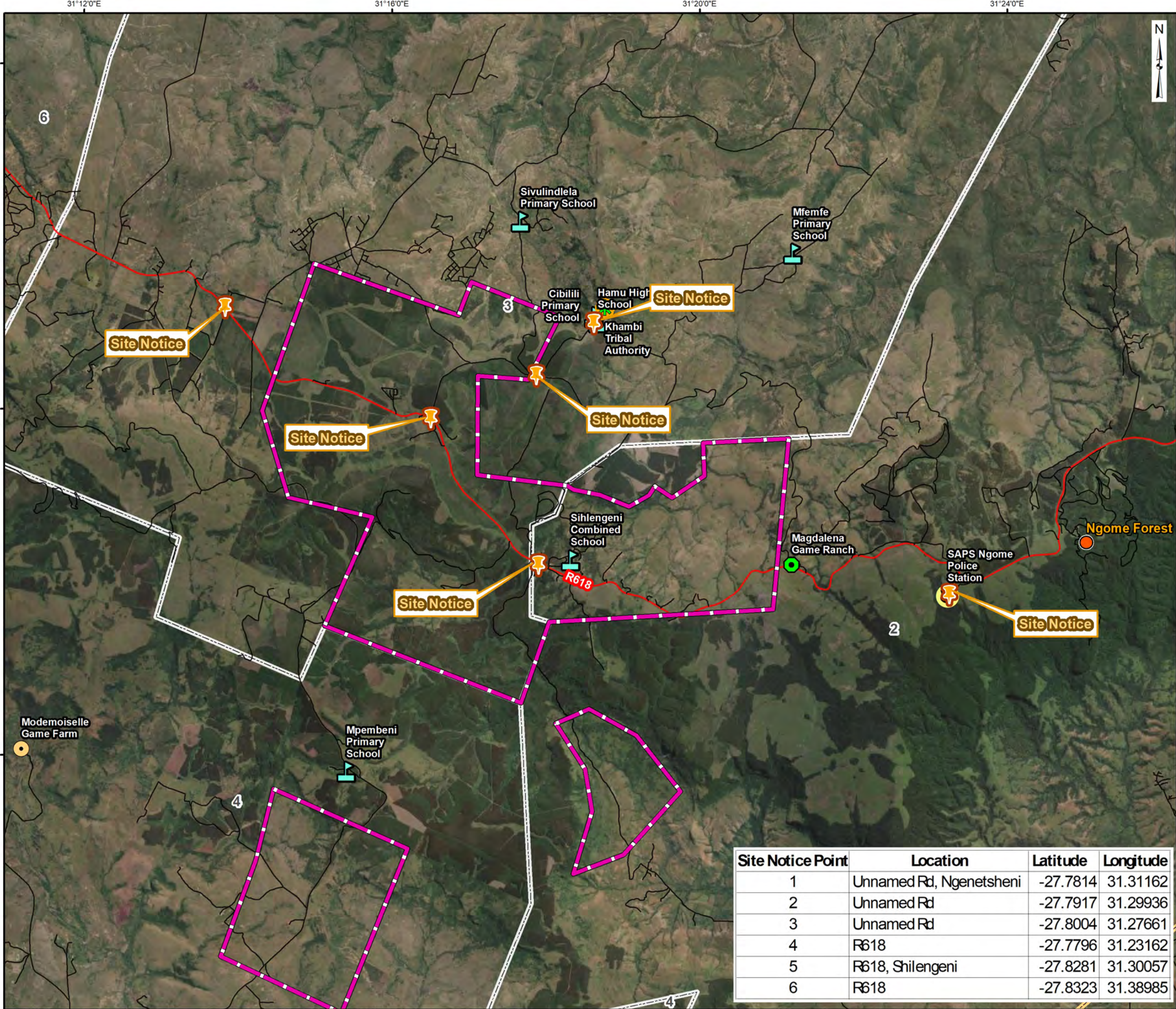


**PROJECT**  
Niara Minerals (Pty) Ltd:  
Isihlengeni Prospecting Rights Application

**TITLE**  
Regional Setting

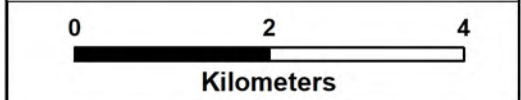
**NIARA MINERALS**

SCALE: 1:220 000 REV: 3  
DATE: 22/07/2025 A3  
Projection: Transverse Mercator 31°E  
Datum: WGS 84



**LEGEND**

- Suburbs & Townships
- 📌 Site Notice Locations
- 🏫 Schools
- ✳️ Khambi Tribal Authority
- 🌳 Magdalena Game Ranch
- 📍 Modemoiselle Game Farm
- 🚓 SAPS Ngome Police Station
- Main Roads
- Secondary Roads
- Project Area
- Municipal Wards
- Local Municipality



Site Notice Point	Location	Latitude	Longitude
1	Unnamed Rd, Ngenetsheni	-27.7814	31.31162
2	Unnamed Rd	-27.7917	31.29936
3	Unnamed Rd	-27.8004	31.27661
4	R618	-27.7796	31.23162
5	R618, Shilengi	-27.8281	31.30057
6	R618	-27.8323	31.38985

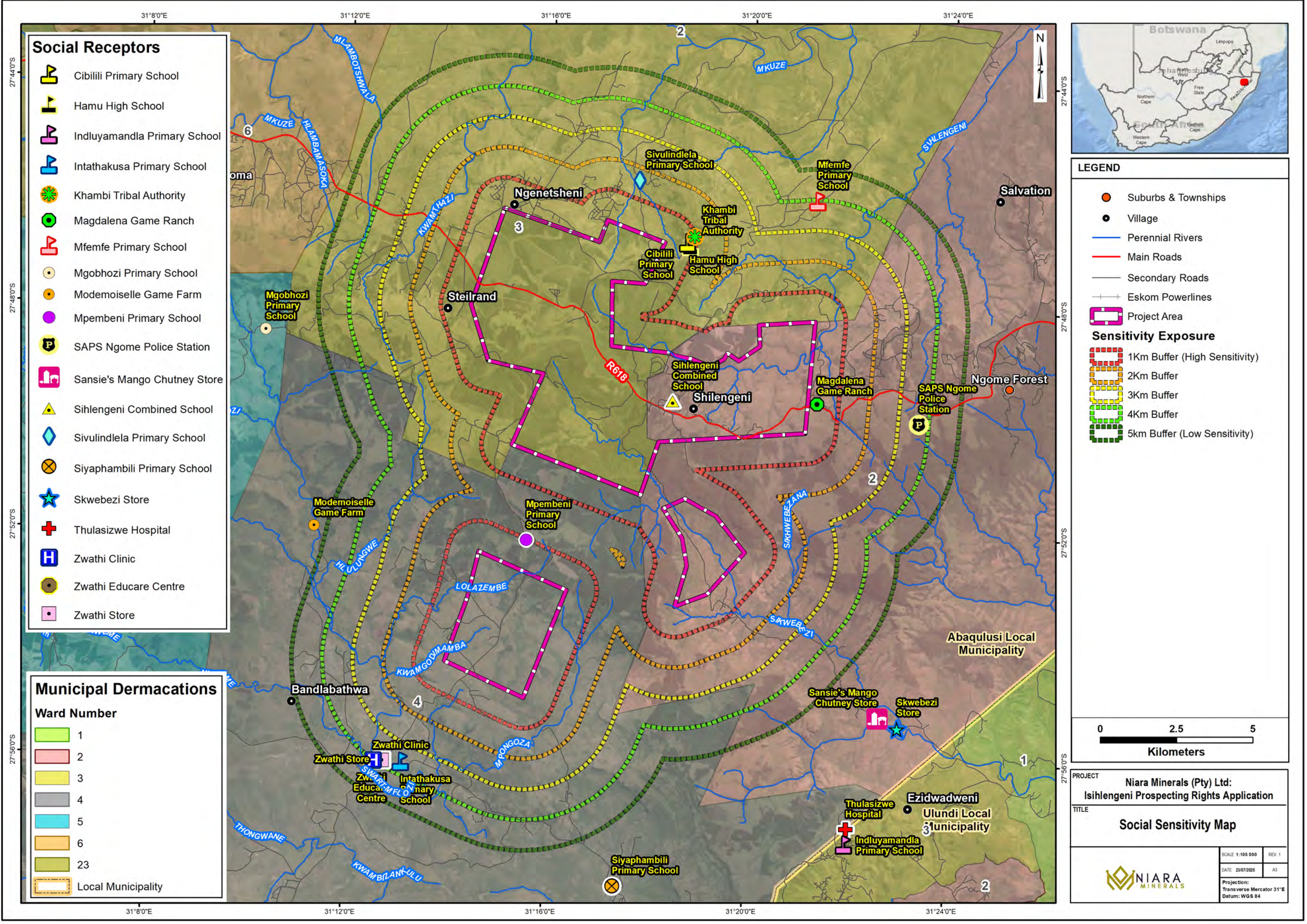
PROJECT: **Niara Minerals (Pty) Ltd: Isihlengi Prospecting Rights Application**

TITLE: **Site Notice Locations**

SCALE: 1:77 749    REV: 3

DATE: 22/07/2025    A3

Projection: Transverse Mercator 31°E  
Datum: WGS 84



**Social Receptors**

- Cibilili Primary School
- Hamu High School
- Indluyamandla Primary School
- Intathakusa Primary School
- Khambi Tribal Authority
- Magdalena Game Ranch
- Mfemfe Primary School
- Mgobhozi Primary School
- Modemoiselle Game Farm
- Mpembeni Primary School
- SAPS Ngome Police Station
- Sansie's Mango Chutney Store
- Sihlengeni Combined School
- Sivulindlela Primary School
- Siyaphambili Primary School
- Skwebezi Store
- Thulasizwe Hospital
- Zwathi Clinic
- Zwathi Educare Centre
- Zwathi Store

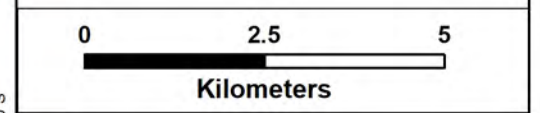
**Municipal Demarcations**

- Ward Number**
- 1
  - 2
  - 3
  - 4
  - 5
  - 6
  - 23
  - Local Municipality



**LEGEND**

- Suburbs & Townships
- Village
- Perennial Rivers
- Main Roads
- Secondary Roads
- Eskom Powerlines
- Project Area
- Sensitivity Exposure**
- 1Km Buffer (High Sensitivity)
- 2Km Buffer
- 3Km Buffer
- 4Km Buffer
- 5km Buffer (Low Sensitivity)



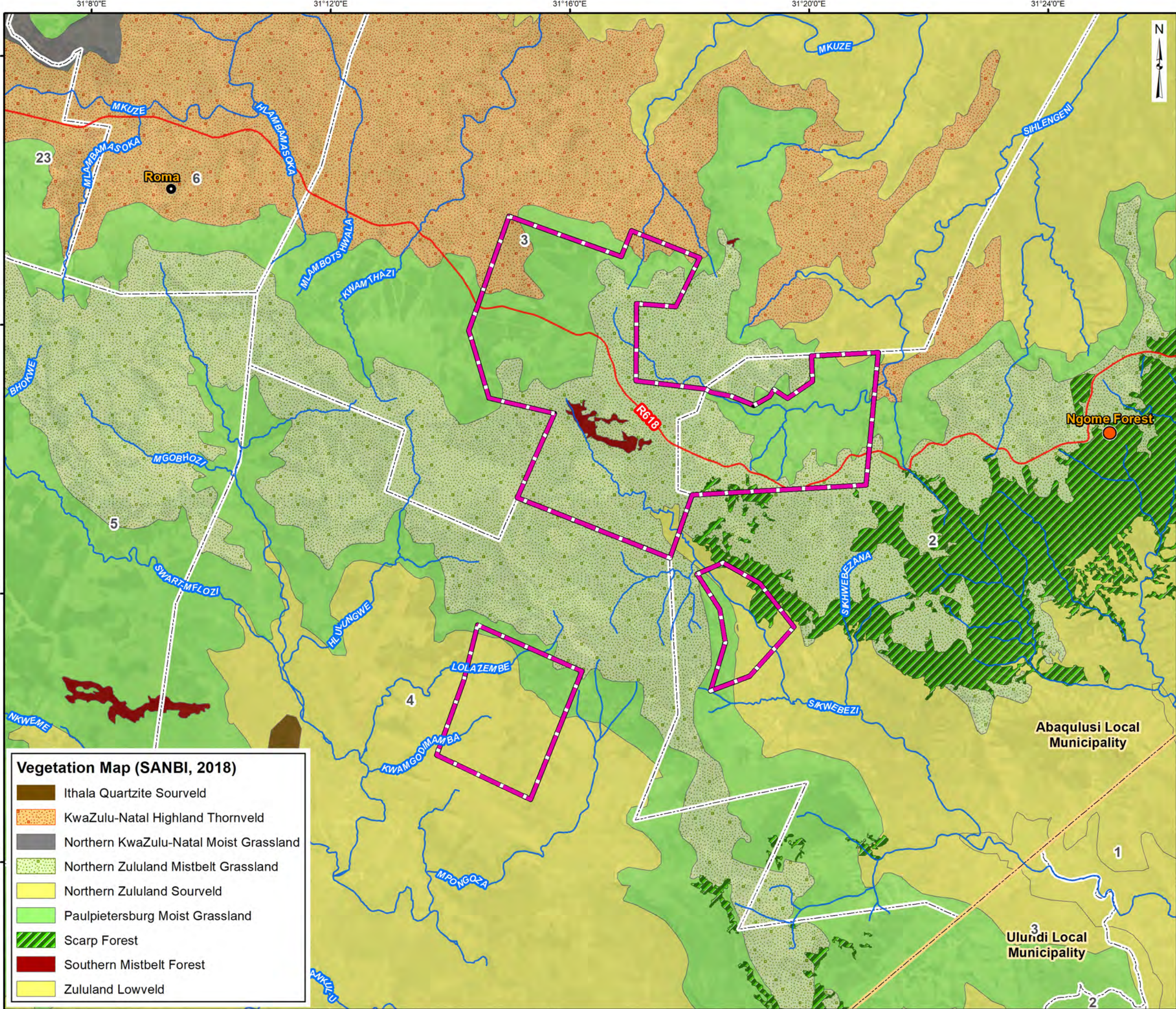
PROJECT: Niara Minerals (Pty) Ltd: Isihlengeni Prospecting Rights Application

TITLE: Social Sensitivity Map

SCALE: 1:105 000    REV: 1

DATE: 23/07/2025    A3

Projection: Transverse Mercator 31°E  
Datum: WGS 84



**LEGEND**

- Suburbs & Townships
- Village
- Perennial Rivers
- Main Roads
- Project Area
- Local Municipality

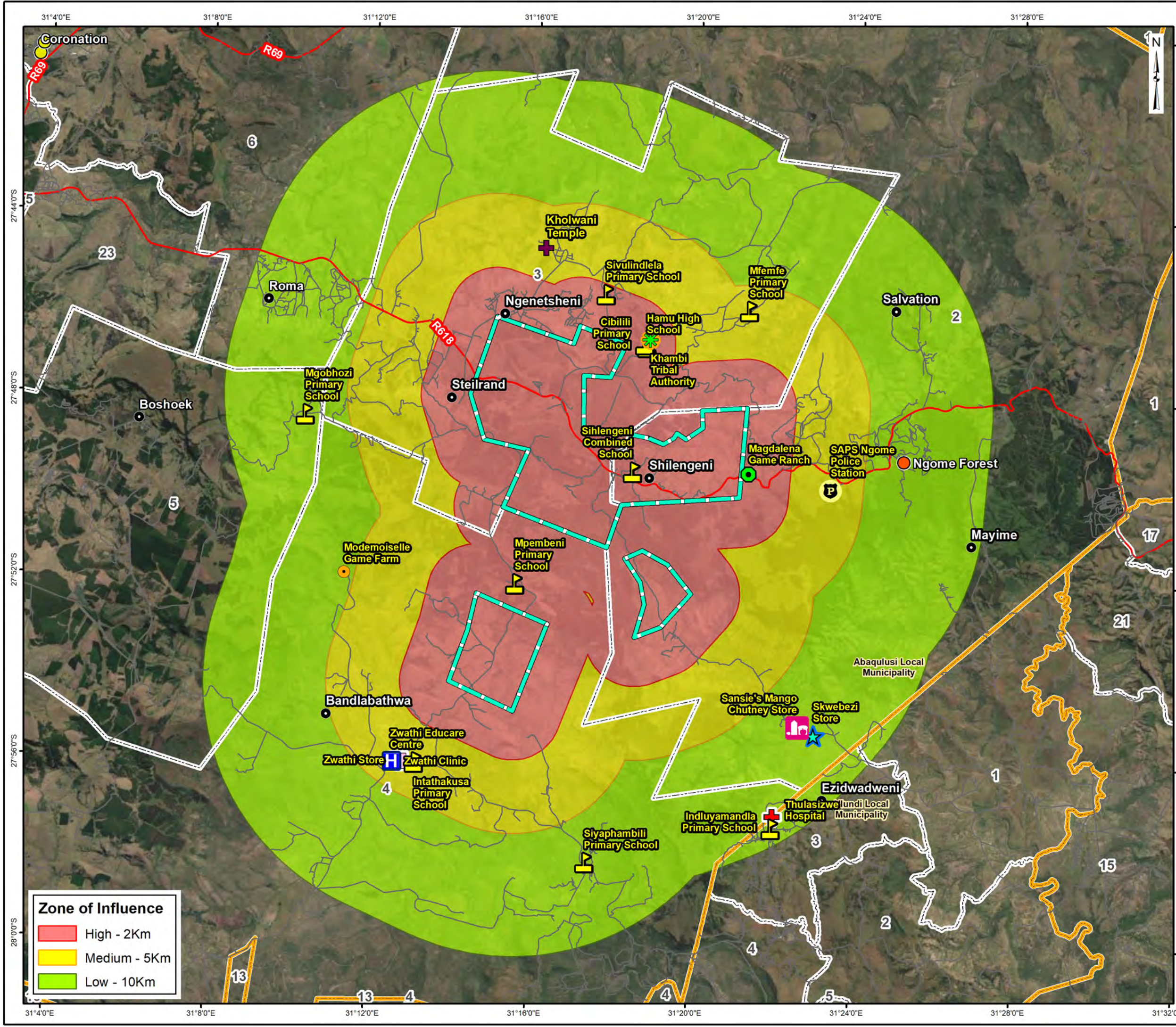


**PROJECT:** Nira Minerals (Pty) Ltd: Isihlengeni Prospecting Rights Application

**TITLE:** Vegetation Map

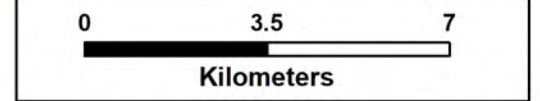
**Scale:** 1:100 000  
**DATE:** 22/07/2025  
**Projection:** Transverse Mercator 31°E  
**Datum:** WGS 84





**LEGEND**

- Suburbs & Townships
- suburb
- Village
- ▮ Schools
- ✳ Khambi Tribal Authority
- Magdalena Game Ranch
- Modemoiselle Game Farm
- P SAPS Ngome Police Station
- ▮ Sansie's Mango Chutney Store
- ★ Skwebezi Store
- + Thulasizwe Hospital
- H Zwathi Clinic
- Zwathi Educare Centre
- Zwathi Store
- + Kholwani Temple
- Main Roads
- Secondary Roads
- ▮ Project Area
- ▮ Municipal Wards
- ▮ Local Municipality



**Zone of Influence**

- High - 2Km
- Medium - 5Km
- Low - 10Km

PROJECT: Niara Minerals (Pty) Ltd:  
Isihlengi Prospecting Rights Application

TITLE: Zone of Influence Map

SCALE: 1:145 000	REV: 3
DATE: 23/07/2025	A3
Projection: Transverse Mercator 31°E Datum: WGS 84	