

**SCREENING REPORT FOR AN ENVIRONMENTAL AUTHORIZATION AS
REQUIRED BY THE 2014 EIA REGULATIONS – PROPOSED SITE
ENVIRONMENTAL SENSITIVITY**

EIA Reference number: KZN 30/5/1/1/2/11948PR

Project name: Prospecting Right Application

Project title: Application for Environmental Authorization for Prospecting for Coal, Pseudocoal and Torbanite/Oil shale situated on various portions of the Farms Isihlengi ,Demoina, Weltevrede, Misty Valley , Spitzkop and Toovernaars Rust in the Magisterial District of Vryheid, Kwa-Zulu Natal (KZN 30/5/1/1/2/ 11948 PR)

Date screening report generated: 07/07/2025 16:04:51

Applicant: Niara Minerals (Pty) Ltd

Compiler: Temvelo consultants (Pty) Ltd

Compiler signature:
.....

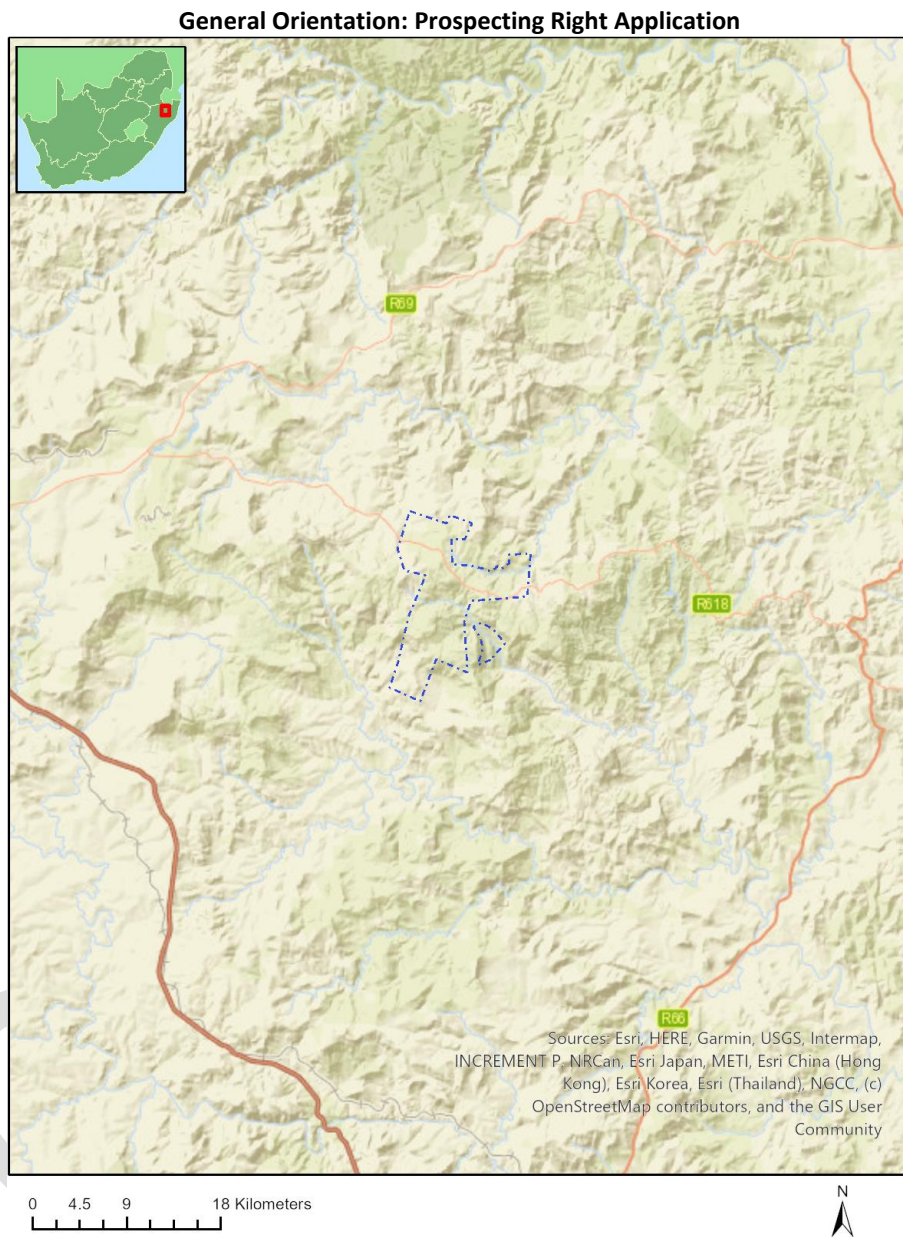
Application Category: Mining|Prospecting rights

Table of Contents

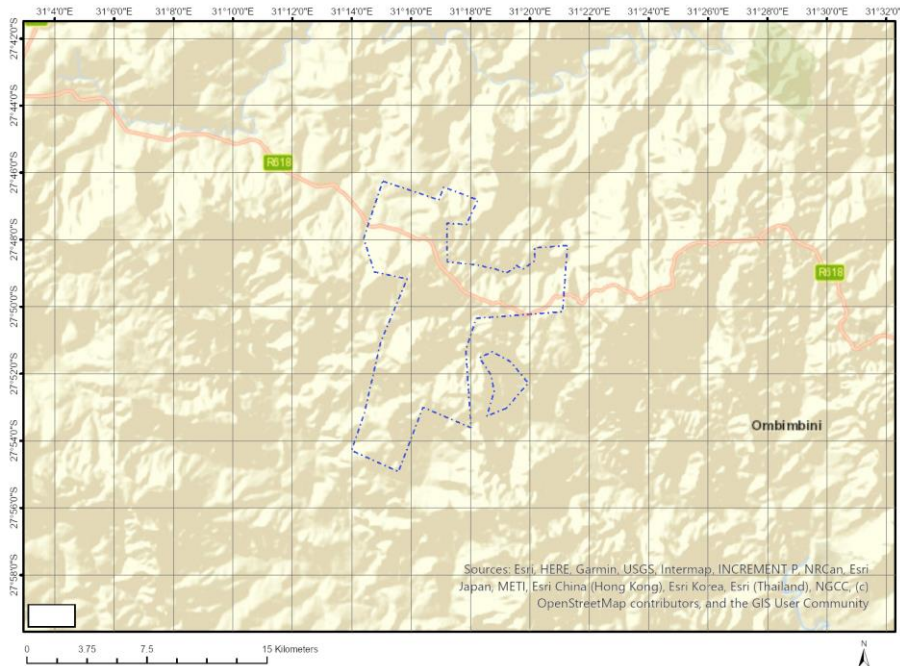
Proposed Project Location	3
Orientation map 1: General location	3
Map of proposed site and relevant area(s)	4
Cadastral details of the proposed site	4
Wind and Solar developments with an approved Environmental Authorisation or applications under consideration within 30 km of the proposed area	5
Environmental Management Frameworks relevant to the application	5
Environmental screening results and assessment outcomes	5
Relevant development incentives, restrictions, exclusions or prohibitions	6
Proposed Development Area Environmental Sensitivity	6
Specialist assessments identified	6
Results of the environmental sensitivity of the proposed area	8
MAP OF RELATIVE AGRICULTURE THEME SENSITIVITY	8
MAP OF RELATIVE ANIMAL SPECIES THEME SENSITIVITY	9
MAP OF RELATIVE AQUATIC BIODIVERSITY THEME SENSITIVITY	10
MAP OF RELATIVE ARCHAEOLOGICAL AND CULTURAL HERITAGE THEME SENSITIVITY	11
MAP OF RELATIVE CIVIL AVIATION THEME SENSITIVITY	12
MAP OF RELATIVE DEFENCE THEME SENSITIVITY	13
MAP OF RELATIVE PALEONTOLOGY THEME SENSITIVITY	14
MAP OF RELATIVE PLANT SPECIES THEME SENSITIVITY	15
MAP OF RELATIVE TERRESTRIAL BIODIVERSITY THEME SENSITIVITY	16

Proposed Project Location

Orientation map 1: General location



Map of proposed site and relevant area(s)



Cadastral details of the proposed site

Property details:

No	Farm Name	Farm/ Erf No	Portion	Latitude	Longitude	Property Type
1	WELTEVREDE	540	0	27°53'37.7S	31°15'10.42E	Farm
2	LISBON	265	0	27°45'31.73S	31°16'1.92E	Farm
3	TOOVERNAARS RUST	518	0	27°49'49.9S	31°16'57.39E	Farm
4	ISIHLENGENI	689	0	27°49'24.15S	31°19'47.98E	Farm
5	DEMOINA	830	0	27°52'13.98S	31°19'5.57E	Farm
6	SPITZKOP	70	0	27°51'57.8S	31°16'25.89E	Farm
7	ISIHLENGENI	857	0	27°48'29.32S	31°19'21.95E	Farm
8	MISTY VALLEY	831	0	27°47'38.43S	31°16'2.35E	Farm
9	SPITZKOP	70	2	27°52'44.89S	31°16'2.3E	Farm Portion
10	SPITZKOP	70	3	27°52'42.87S	31°17'33.86E	Farm Portion
11	SPITZKOP	70	4	27°52'3.53S	31°16'12.08E	Farm Portion
12	SPITZKOP	70	5	27°52'53.84S	31°16'59.49E	Farm Portion
13	SPITZKOP	70	6	27°52'10.33S	31°15'22.27E	Farm Portion
14	SPITZKOP	70	7	27°52'20.8S	31°16'8.49E	Farm Portion
15	SPITZKOP	70	8	27°53'24.94S	31°17'41.98E	Farm Portion
16	SPITZKOP	70	9	27°52'58.84S	31°17'50.8E	Farm Portion
17	SPITZKOP	70	10	27°53'8.88S	31°17'45.56E	Farm Portion
18	SPITZKOP	70	11	27°53'16.05S	31°17'44.56E	Farm Portion
19	SPITZKOP	70	12	27°51'54.56S	31°17'40.96E	Farm Portion
20	SPITZKOP	70	13	27°51'36.08S	31°16'59.92E	Farm Portion
21	SPITZKOP	70	14	27°51'32.52S	31°15'0.11E	Farm Portion
22	SPITZKOP	70	15	27°52'49.23S	31°17'15.95E	Farm Portion
23	SPITZKOP	70	16	27°52'7.2S	31°16'40.26E	Farm Portion
24	SPITZKOP	70	17	27°52'26.2S	31°17'8.81E	Farm Portion
25	SPITZKOP	70	19	27°51'9.24S	31°15'45.09E	Farm Portion
26	LISBON	265	1	27°45'41S	31°15'30.05E	Farm Portion

27	TOOVERNAARS RUST	518	0	27°49'40.34S	31°17'6.99E	Farm Portion
28	TOOVERNAARS RUST	518	2	27°49'24.87S	31°18'4.21E	Farm Portion
29	TOOVERNAARS RUST	518	3	27°48'56.16S	31°17'27.18E	Farm Portion
30	TOOVERNAARS RUST	518	4	27°50'22.54S	31°16'28.19E	Farm Portion
31	TOOVERNAARS RUST	518	5	27°49'59.76S	31°18'3.74E	Farm Portion
32	TOOVERNAARS RUST	518	6	27°50'2.87S	31°16'34.28E	Farm Portion
33	TOOVERNAARS RUST	518	1	27°49'11.78S	31°16'5.68E	Farm Portion
34	WELTEVREDE	540	1	27°53'37.7S	31°15'10.42E	Farm Portion
35	ISIHLENGENI	689	2	27°49'37.45S	31°18'25.9E	Farm Portion
36	ISIHLENGENI	689	0	27°49'24.15S	31°19'47.98E	Farm Portion
37	DEMOINA	830	0	27°52'13.98S	31°19'5.57E	Farm Portion
38	MISTY VALLEY	831	0	27°47'6.99S	31°16'13.24E	Farm Portion
39	MISTY VALLEY	831	1	27°48'14.85S	31°15'49.72E	Farm Portion
40	ISIHLENGENI	857	0	27°48'29.32S	31°19'21.95E	Farm Portion

Development footprint¹ vertices:
No development footprint(s) specified.

Wind and Solar developments with an approved Environmental Authorisation or applications under consideration within 30 km of the proposed area

No nearby wind or solar developments found.

Environmental Management Frameworks relevant to the application

No intersections with EMF areas found.

Environmental screening results and assessment outcomes

The following sections contain a summary of any development incentives, restrictions, exclusions or prohibitions that apply to the proposed development site as well as the most environmental sensitive features on the site based on the site sensitivity screening results for the application classification that was selected. The application classification selected for this report is:

Mining | Prospecting rights.

¹ “development footprint”, means the area within the site on which the development will take place and includes all ancillary developments for example roads, power lines, boundary walls, paving etc. which require vegetation clearance or which will be disturbed and for which the application has been submitted.

Relevant development incentives, restrictions, exclusions or prohibitions

The following development incentives, restrictions, exclusions or prohibitions and their implications that apply to this site are indicated below.

Incentive, restriction or prohibition	Implication
Strategic Transmission Corridor-Expanded Eastern Corridor	https://screening.environment.gov.za/ScreeningDownloads/DevelopmentZones/Combined_EGI.pdf
Strategic Gas Pipeline Corridors-Phase 3: Richards Bay to Gauteng	https://screening.environment.gov.za/ScreeningDownloads/DevelopmentZones/Combined_GAS.pdf
Strategic Gas Pipeline Corridors-Phase 7: Coega to Richards Bay	https://screening.environment.gov.za/ScreeningDownloads/DevelopmentZones/Combined_GAS.pdf

Proposed Development Area Environmental Sensitivity

The following summary of the development site environmental sensitivities is identified. Only the highest environmental sensitivity is indicated. The footprint environmental sensitivities for the proposed development footprint as identified, are indicative only and must be verified on site by a suitably qualified person before the specialist assessments identified below can be confirmed.

Theme	Very High sensitivity	High sensitivity	Medium sensitivity	Low sensitivity
Agriculture Theme	X			
Animal Species Theme		X		
Aquatic Biodiversity Theme	X			
Archaeological and Cultural Heritage Theme				X
Civil Aviation Theme				X
Defence Theme				X
Paleontology Theme	X			
Plant Species Theme		X		
Terrestrial Biodiversity Theme	X			

Specialist assessments identified

Based on the selected classification, and the known impacts associated with the proposed development, the following list of specialist assessments have been identified for inclusion in the assessment report. It is the responsibility of the EAP to confirm this list and to motivate in the assessment report, the reason for not including any of the identified specialist study including the provision of photographic evidence of the site situation.

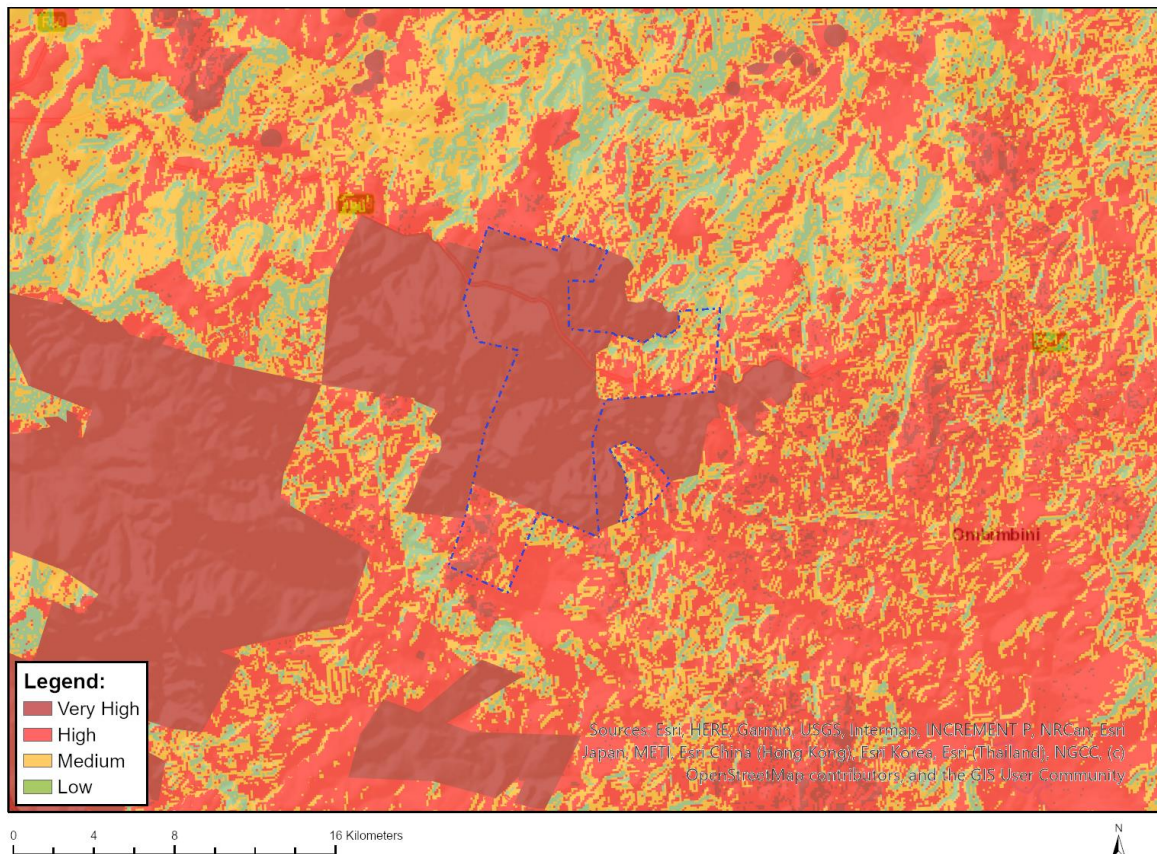
No	Specialist assessment	Assessment Protocol
1	Agricultural Impact Assessment	https://screening.environment.gov.za/ScreeningDownloads/AssessmentProtocols/Gazetted_General_Agriculture_Assessment_Protocols.pdf
2	Archaeological and Cultural Heritage Impact Assessment	https://screening.environment.gov.za/ScreeningDownloads/AssessmentProtocols/GuidanceforHIA.pdf

3	Palaeontology Impact Assessment	https://screening.environment.gov.za/ScreeningDownloads/AssessmentProtocols/GuidanceforPIA.pdf
4	Terrestrial Biodiversity Impact Assessment	https://screening.environment.gov.za/ScreeningDownloads/AssessmentProtocols/Gazetted Terrestrial Biodiversity Assessment Protocols.pdf
5	Aquatic Biodiversity Impact Assessment	https://screening.environment.gov.za/ScreeningDownloads/AssessmentProtocols/Gazetted Aquatic Biodiversity Assessment Protocols.pdf
6	Noise Impact Assessment	https://screening.environment.gov.za/ScreeningDownloads/AssessmentProtocols/Gazetted Noise Impacts Assessment Protocol.pdf
7	Radioactivity Impact Assessment	https://screening.environment.gov.za/ScreeningDownloads/AssessmentProtocols/Gazetted General Requirement Assessment Protocols.pdf
8	Plant Species Assessment	https://screening.environment.gov.za/ScreeningDownloads/AssessmentProtocols/Gazetted Plant Species Assessment Protocols.pdf
9	Animal Species Assessment	https://screening.environment.gov.za/ScreeningDownloads/AssessmentProtocols/Gazetted Animal Species Assessment Protocols.pdf

Results of the environmental sensitivity of the proposed area.

The following section represents the results of the screening for environmental sensitivity of the proposed site for relevant environmental themes associated with the project classification. It is the duty of the EAP to ensure that the environmental themes provided by the screening tool are comprehensive and complete for the project. Refer to the disclaimer.

MAP OF RELATIVE AGRICULTURE THEME SENSITIVITY



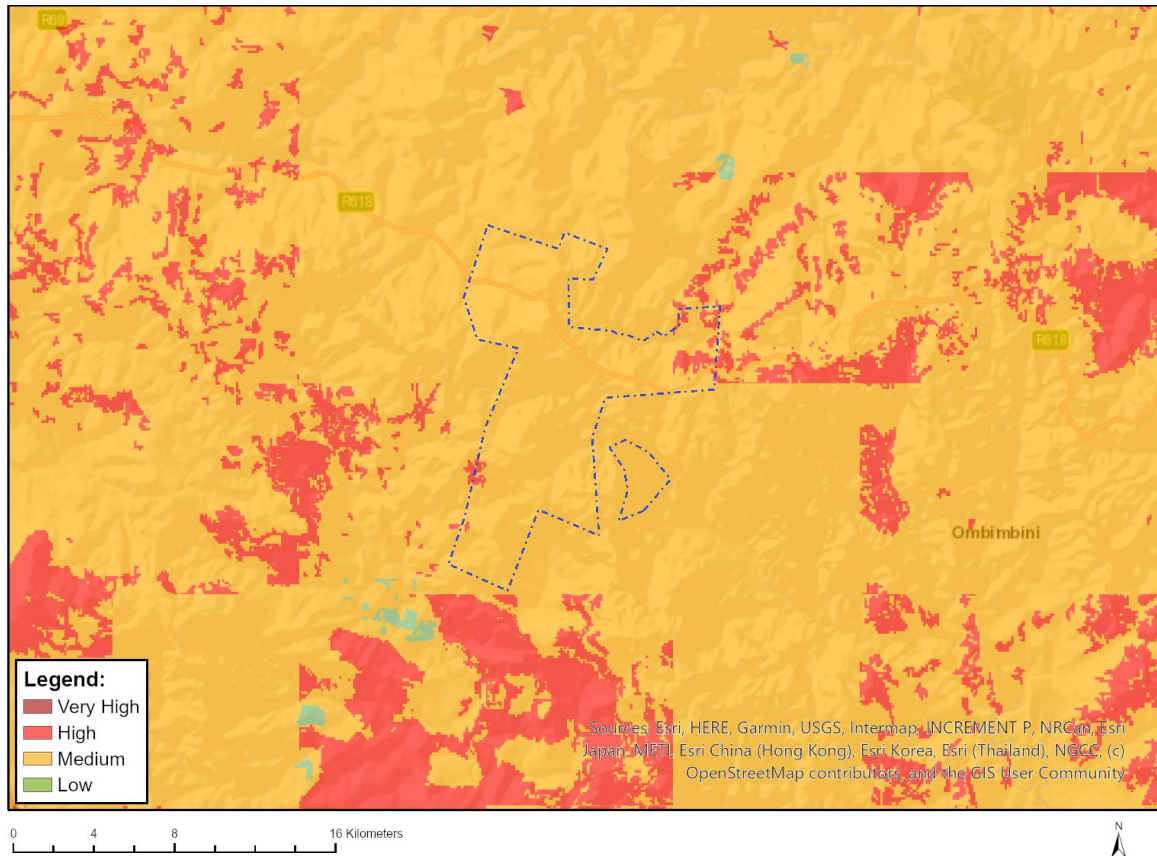
Very High sensitivity	High sensitivity	Medium sensitivity	Low sensitivity
X			

Sensitivity Features:

Sensitivity	Feature(s)
High	Subsistence_Farming_1
High	08. Moderate
High	09. Moderate-High
High	10. Moderate-High
Low	02. Very low
Low	03. Low-Very low
Low	04. Low-Very low
Low	05. Low
Medium	06. Low-Moderate
Medium	07. Low-Moderate

Very High	11. High
Very High	12. High-Very high
Very High	Kwa-Ngenetsheni PAA

MAP OF RELATIVE ANIMAL SPECIES THEME SENSITIVITY



Where only a sensitive plant unique number or sensitive animal unique number is provided in the screening report and an assessment is required, the environmental assessment practitioner (EAP) or specialist is required to email SANBI at eiadatarequests@sanbi.org.za listing all sensitive species with their unique identifiers for which information is required. The name has been withheld as the species may be prone to illegal harvesting and must be protected. SANBI will release the actual species name after the details of the EAP or specialist have been documented.

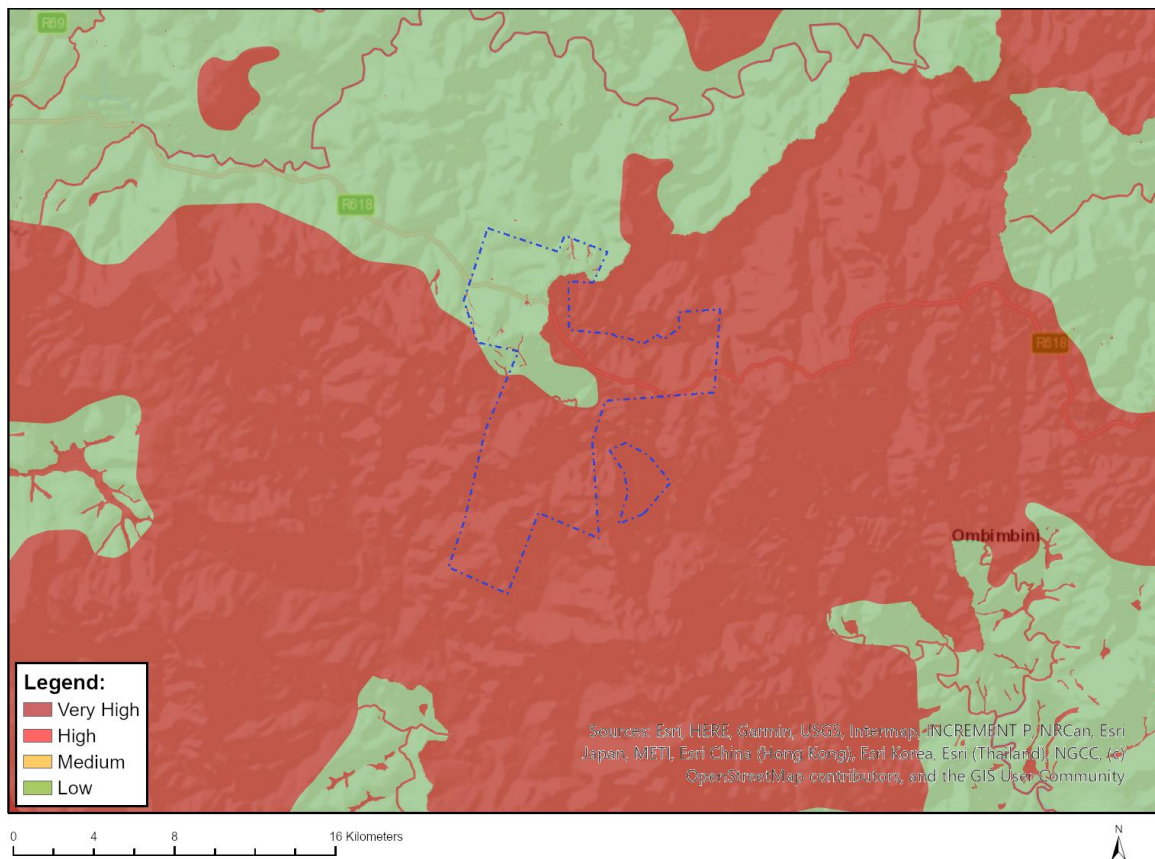
Very High sensitivity	High sensitivity	Medium sensitivity	Low sensitivity
	X		

Sensitivity Features:

Sensitivity	Feature(s)
High	Aves-Stephanoaetus coronatus
High	Aves-Columba delegorguei
High	Aves-Falco biarmicus
High	Aves-Sagittarius serpentarius
High	Mammalia-Redunca fulvorufula fulvorufula
Medium	Aves-Aquila rapax
Medium	Aves-Stephanoaetus coronatus
Medium	Aves-Columba delegorguei
Medium	Aves-Eupodotis senegalensis

Medium	Mammalia-Crocidura maquassiensis
Medium	Mammalia-Hydrictis maculicollis
Medium	Mammalia-Lycaon pictus
Medium	Mammalia-Ourebia ourebi ourebi
Medium	Sensitive species 8
Medium	Reptilia-Kinixys natalensis
Medium	Invertebrate-Forest invertebrate
Medium	Invertebrate-Physophorina livingstonii

MAP OF RELATIVE AQUATIC BIODIVERSITY THEME SENSITIVITY

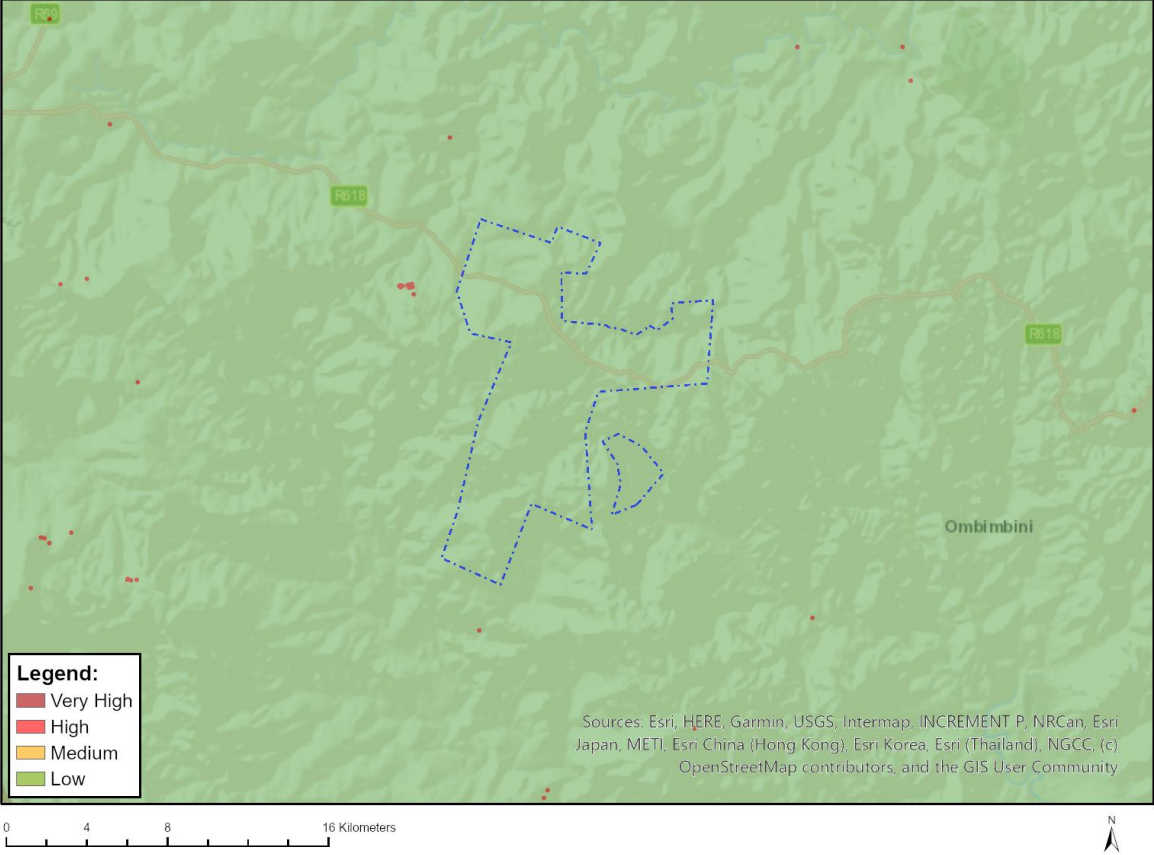


Very High sensitivity	High sensitivity	Medium sensitivity	Low sensitivity
X			

Sensitivity Features:

Sensitivity	Feature(s)
Low	Low Sensitivity
Very High	Wetlands_Seep
Very High	FEPA Subcatchment
Very High	Rivers
Very High	SWSA (sw)_Mfolozi Headwaters

MAP OF RELATIVE ARCHAEOLOGICAL AND CULTURAL HERITAGE THEME SENSITIVITY

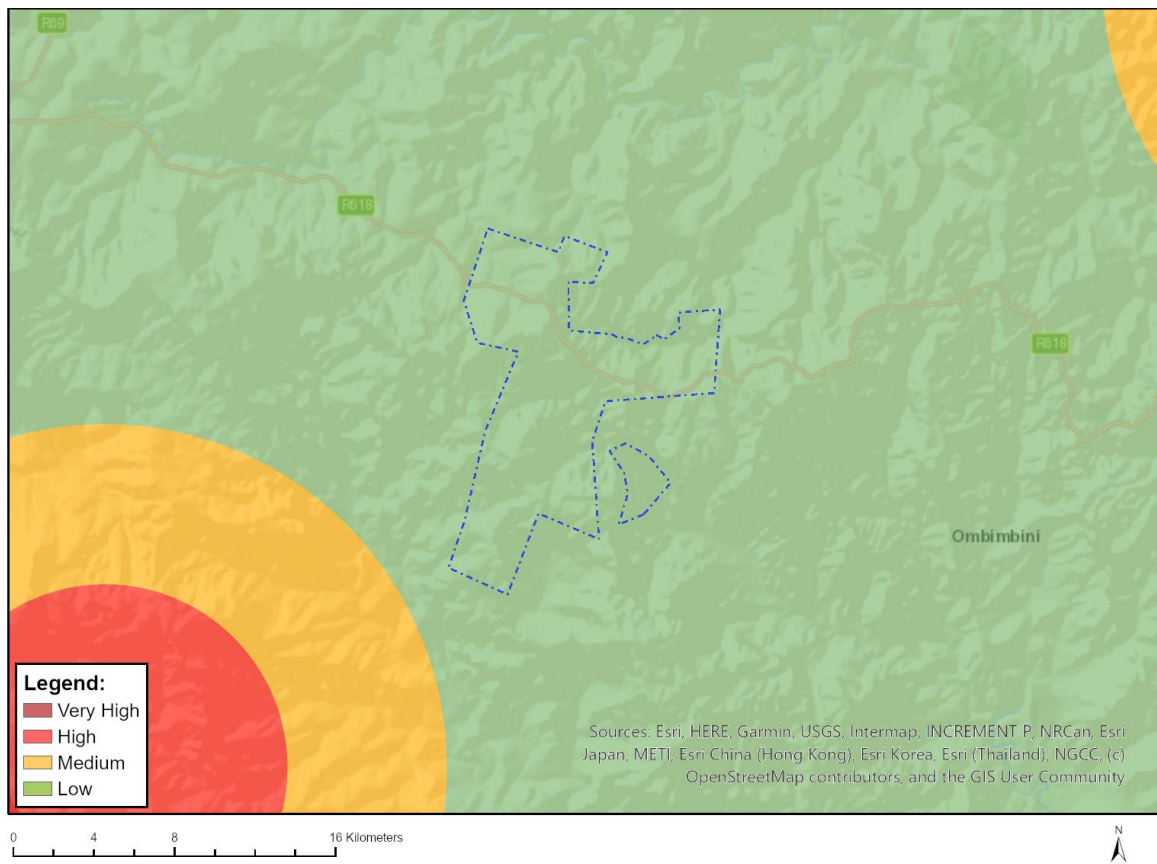


Very High sensitivity	High sensitivity	Medium sensitivity	Low sensitivity
			X

Sensitivity Features:

Sensitivity	Feature(s)
Low	Low Sensitivity

MAP OF RELATIVE CIVIL AVIATION THEME SENSITIVITY

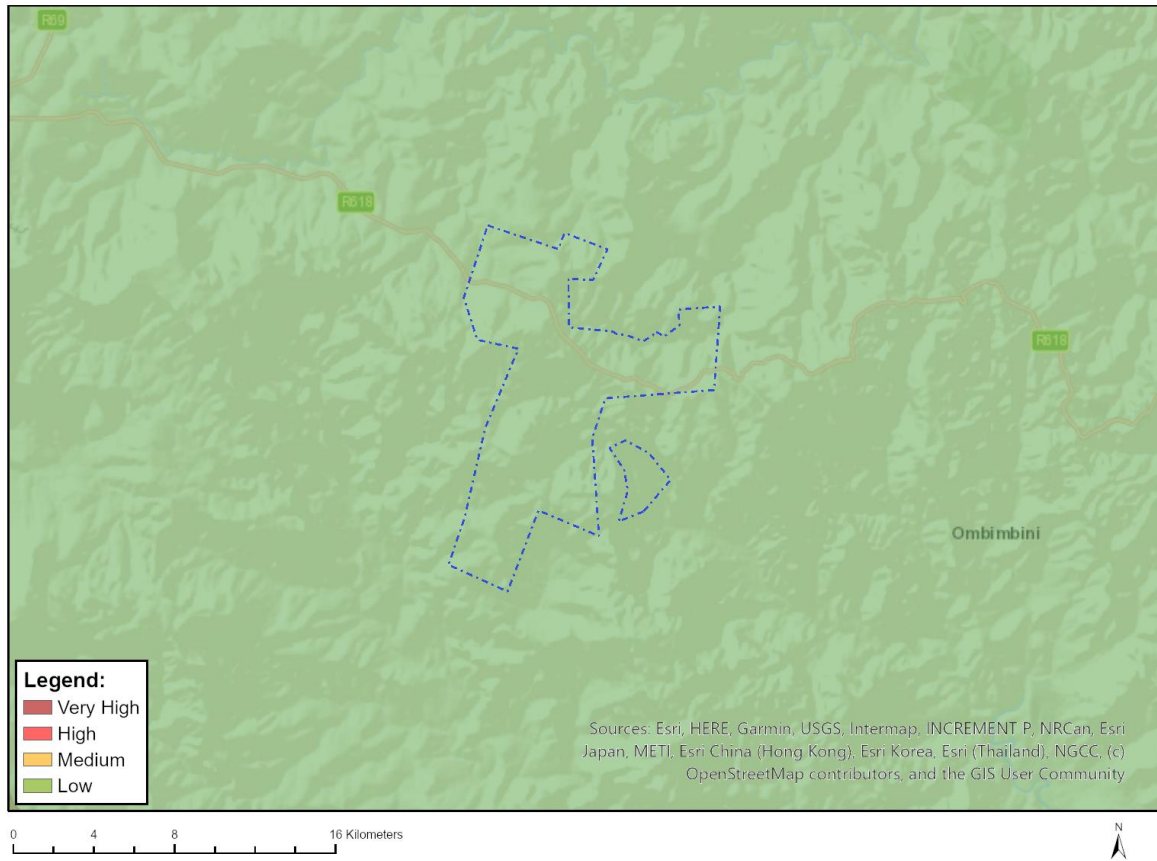


Very High sensitivity	High sensitivity	Medium sensitivity	Low sensitivity
			X

Sensitivity Features:

Sensitivity	Feature(s)
Low	Low sensitivity

MAP OF RELATIVE DEFENCE THEME SENSITIVITY

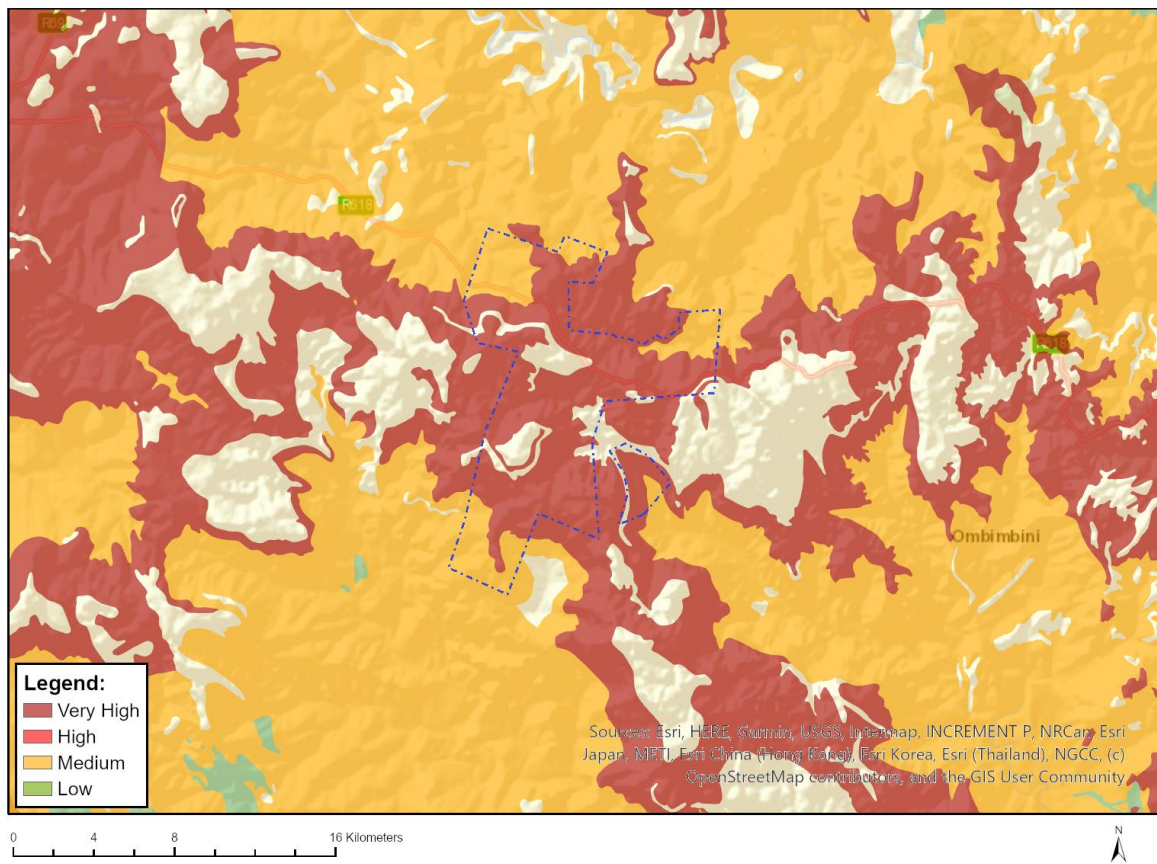


Very High sensitivity	High sensitivity	Medium sensitivity	Low sensitivity
			X

Sensitivity Features:

Sensitivity	Feature(s)
Low	Low Sensitivity

MAP OF RELATIVE PALEONTOLOGY THEME SENSITIVITY

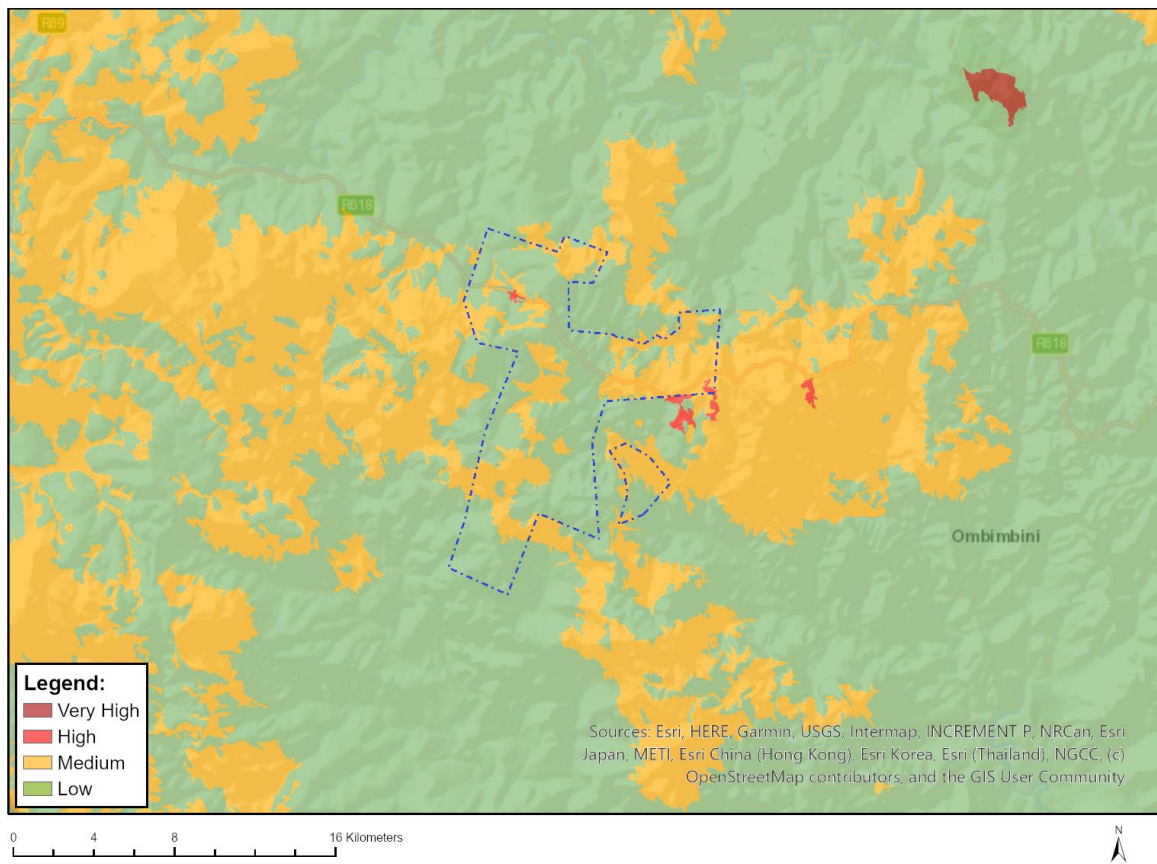


Very High sensitivity	High sensitivity	Medium sensitivity	Low sensitivity
X			

Sensitivity Features:

Sensitivity	Feature(s)
Medium	Features with a Medium paleontological sensitivity
Very High	Features with a Very High paleontological sensitivity

MAP OF RELATIVE PLANT SPECIES THEME SENSITIVITY



Where only a sensitive plant unique number or sensitive animal unique number is provided in the screening report and an assessment is required, the environmental assessment practitioner (EAP) or specialist is required to email SANBI at eiadatarequests@sanbi.org.za listing all sensitive species with their unique identifiers for which information is required. The name has been withheld as the species may be prone to illegal harvesting and must be protected. SANBI will release the actual species name after the details of the EAP or specialist have been documented.

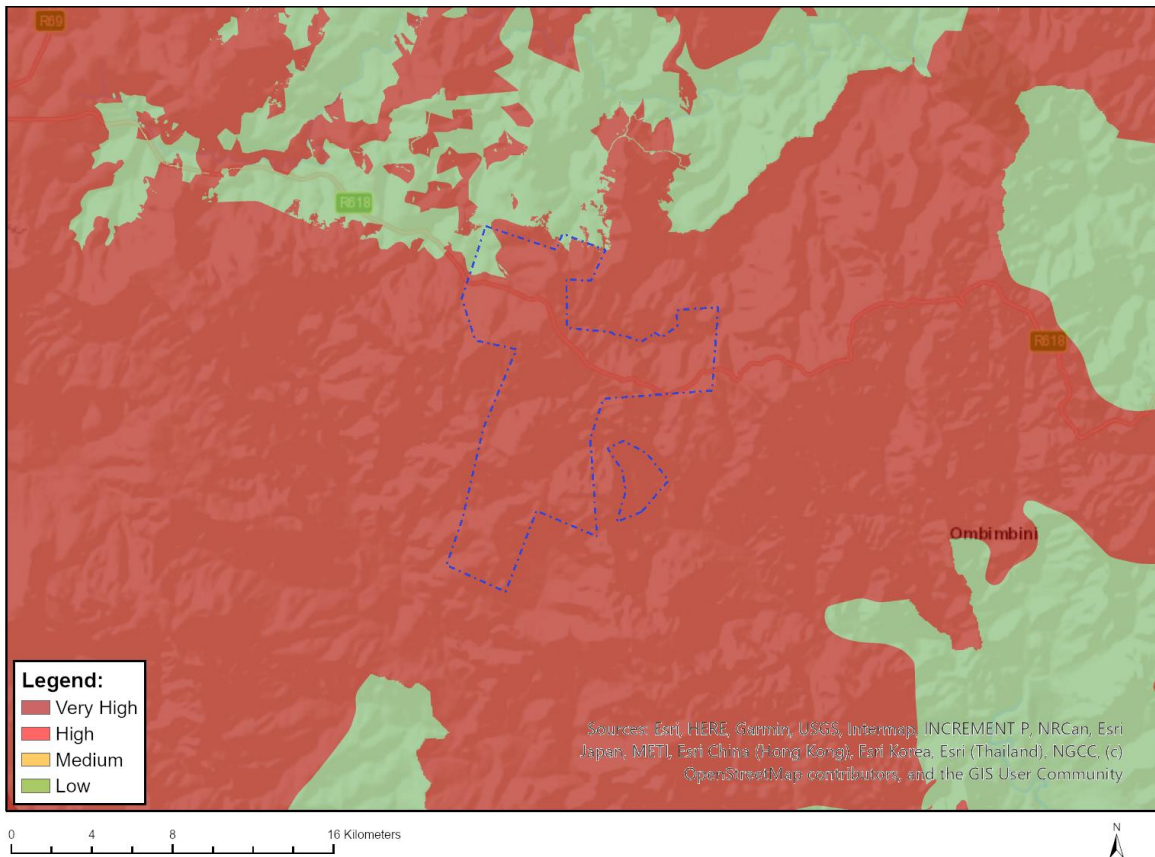
Very High sensitivity	High sensitivity	Medium sensitivity	Low sensitivity
	X		

Sensitivity Features:

Sensitivity	Feature(s)
High	Dierama erectum
High	Sensitive species 658
High	Helichrysum ingomense
High	Sensitive species 311
High	Sensitive species 313
High	Gerbera aurantiaca
Low	Low Sensitivity
Medium	Faurea macnaughtonii
Medium	Ocotea bullata
Medium	Sensitive species 1252
Medium	Ocotea kenyensis
Medium	Sensitive species 89
Medium	Dierama erectum

Medium	Dracosciadium italae
Medium	Sensitive species 658
Medium	Schizoglossum ingomense
Medium	Schizochilus gerrardii
Medium	Helichrysum ingomense
Medium	Cassipourea gummiflua var. verticillata
Medium	Sensitive species 609
Medium	Sensitive species 1168
Medium	Sensitive species 1083
Medium	Sensitive species 814
Medium	Sensitive species 1152
Medium	Sensitive species 311
Medium	Sensitive species 313
Medium	Sensitive species 401
Medium	Gerbera aurantiaca
Medium	Prunus africana

MAP OF RELATIVE TERRESTRIAL BIODIVERSITY THEME SENSITIVITY



Very High sensitivity	High sensitivity	Medium sensitivity	Low sensitivity
X			

Sensitivity Features:

Sensitivity	Feature(s)
Low	Low Sensitivity

Very High	CBA 1
Very High	CBA 2
Very High	ESA
Very High	FEPA Subcatchment
Very High	Indigenous forest_Scarp Forest
Very High	Indigenous forest_Southern Mistbelt Forest
Very High	SWSA (sw)_Mfolozi Headwaters
Very High	National Protected Area Expansion Strategy (NPAES)
Very High	EN_Northern Zululand Mistbelt Grassland
Very High	EN_Paulpietersburg Moist Grassland

OFFICIAL